

Application Number: 24/01703/FUL

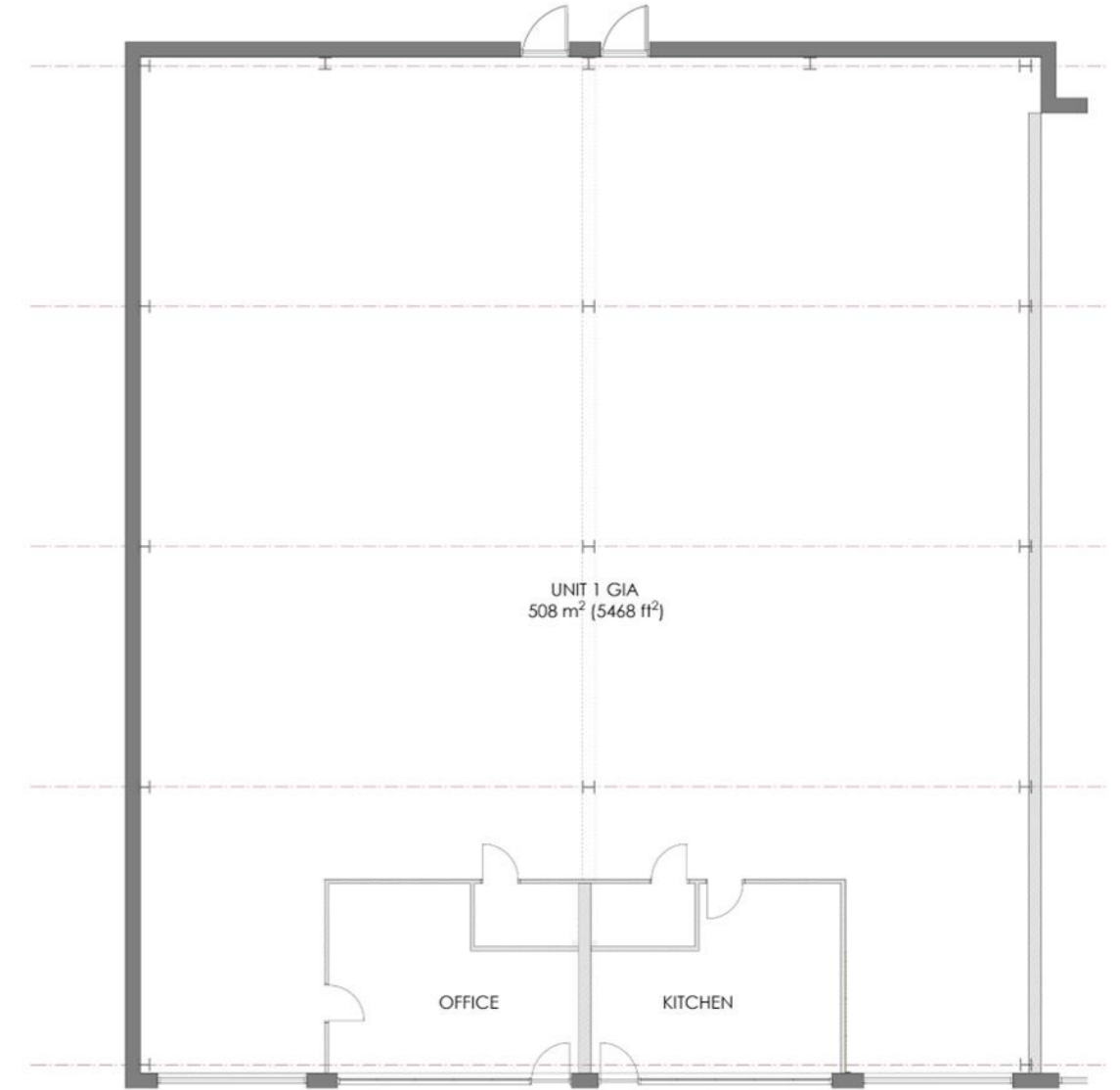
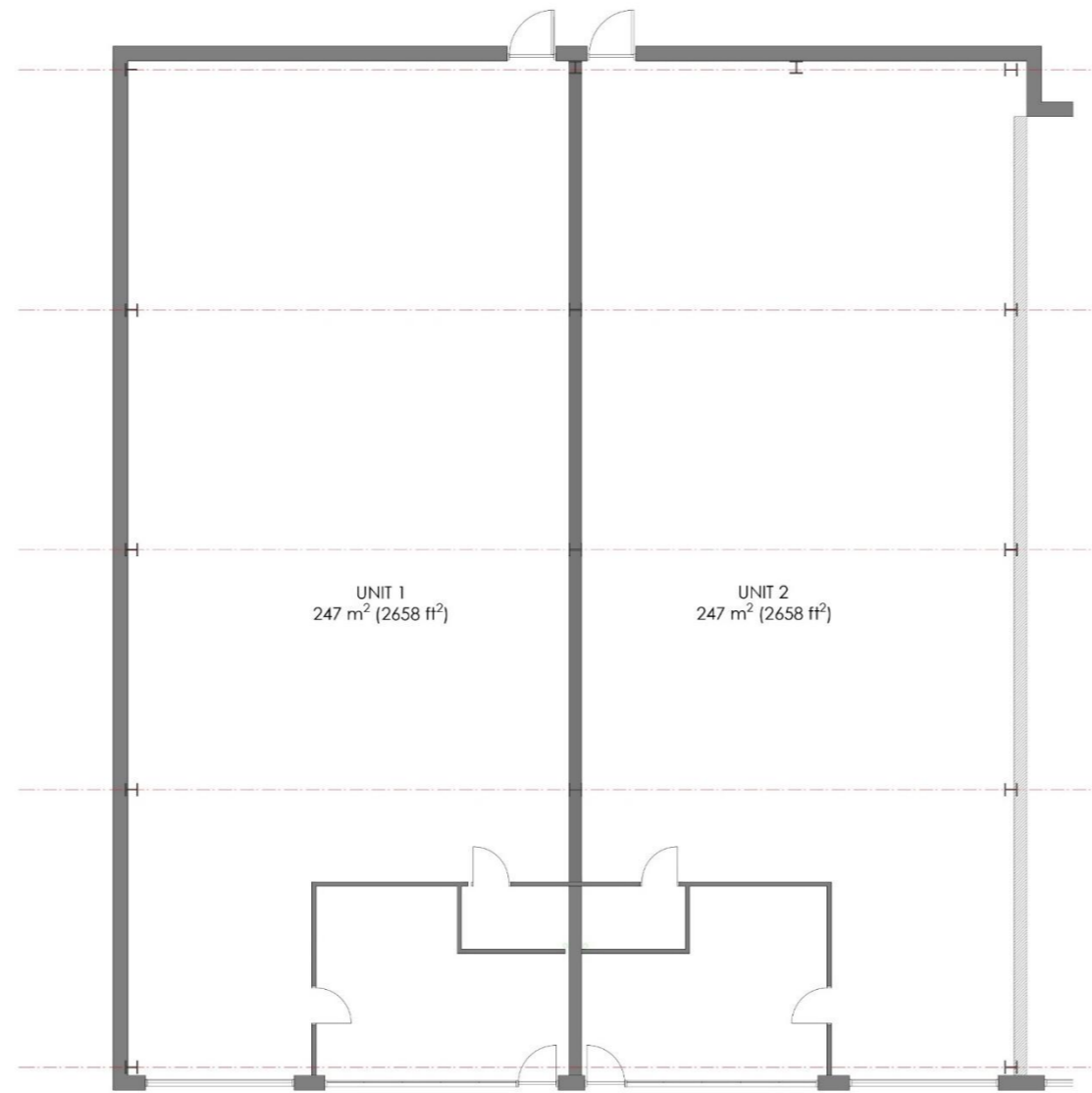
Plans and drawings extracts

Proposal: The merging of Units 1 and 2 to create 1no. unit, the change of use of this new unit from Light Industrial/ General Industrial/storage and distribution (Use Classes E(g)(iii)/B2/B8) to leisure for use as golf simulator (Use Class E(d)) with shutter change to glazed door and screen **at** 1 - 2 Heathfield Gateway, Heathfield, Stacey Bushes, Milton Keynes, MK12 6BP

Applicant: The Pro Shot Golf Club Ltd

Application type: Full planning permission







EXISTING FRONT ELEVATION
1:100



PROPOSED FRONT ELEVATION
1:100

