



Report of the Plan:MK Vision Workshops, Spring 2015

The first consultation stage for Plan:MK allowed stakeholders to explore the various issues that the plan would need to consider through a series of twelve Topic Papers. We received lots of interesting and useful comments in response to those papers, which will be used as we prepare the next stages of the plan. There were also some concerns raised that there was a lack of long-term vision for the future of Milton Keynes, and that the plan ought to address this. So, in order to help us in preparing the plan and understand what our stakeholders think is important for the future, we decided to take a step back to look at what Milton Keynes should be like in the longer term.

By thinking now about the long term future, about how big Milton Keynes might grow and what it might look like, we can make sure that the developments we create now fit with that longer term vision and don't prevent it from being achieved in the future. In the same way that the original 1970 plan for Milton Keynes looked at the way the city would develop over several decades, with a greater focus on how the first ten years of the plan would be delivered, it was felt there should be a discussion of the long term vision for the Borough, looking over several decades to help frame the development strategy for Plan:MK. The development strategy will be based around delivering the first 15-year phase of the longer term, spatial vision.

In order to think about what that longer term vision might include, a series of workshops were held during Spring 2015. The intention of these workshops was to provide a forum for discussion on the future of Milton Keynes; an opportunity to clarify the strategic issues facing the Borough over the coming decades; and to make sure a wide group of stakeholders had the chance to get involved in the debate.

This report is intended to explain the approach we took in the workshops, who was involved, what we learnt through the sessions and the outputs that were created by those that were invited, and how they have been used to inform the Plan:MK process moving forward.

What, when, where, who, how...

We wanted to understand from a wide range of stakeholders, what their aspirations were for the future of Milton Keynes as we look forward over the coming decades and to think about how this could be translated into a vision for the plan. We also wanted to get views on what Milton Keynes might look like in the future; how and where it could grow; what connections should be strengthened or what infrastructure might be needed; and how the aspirations and ambitions that had been identified could be translated on the ground.

In order to do this, we wanted to be able to have a discussion between different groups of stakeholders and allow people with different viewpoints to debate between themselves some of the issues. To do this, we organised three 3-hour sessions over a two-day period. These first sessions were held on the following dates at venues in Milton Keynes.

- Thursday 26th March 2015, 10am - 1pm at the Milton Keynes Christian Centre in Oldbrook
- Thursday 26th March 2015, 2.30pm - 5.30pm at the Milton Keynes Christian Centre in Oldbrook
- Friday 27th March 2015, 10am - 1pm at the Kents Hill Park Conference and Training Centre

When organising these first sessions, it was clear that several of our Ward Councillors were unable to attend in the lead up to the local elections and some of our other invited stakeholders were not able to make time in their working day, so an additional session was held organised and held on

- Thursday 11th June 2015, 6pm – 9pm at the Kents Hill Park Conference and Training Centre.

For this session, we made a particular effort to encourage a greater diversity of attendees, by asking the Council's Equality and Diversity Officer to invite representatives from a range of communities and groups from across the Borough.

In addition, to help engage with an audience that is often quite hard to reach, we held a session with young adults over lunchtime Thursday 9th April 2015 at the Council's Civic Offices. The participants were aged between 17 and 23 years and included 6th Form/College students, University students from MK who were studying elsewhere in the country, and MK residents who had returned from studying and were now working MK. All had been residents of Milton Keynes for at least ten years and were picked through personal contacts and local community groups.

We also held two workshops with schoolchildren aged between 11 and 16 at the MySayMK conference on 8th July 2015. These followed a different format to the other Vision Workshops so the outputs have not been incorporated as inputs into developing the Vision in quite the same way. However, they will be reflected in our thoughts as we prepared the plan and included in the Consultation Statement for Plan:MK that will summarise all of the engagement we do throughout the whole plan-making process.

We tried to ensure that the list of stakeholders that were invited to attend the workshops was as varied and inclusive as possible, and allowed a wide range of individuals and organisations to get involved and have their say. The list of invitees included the following:

- Local residents
- Town and Parish Councils
- Ward Councillors
- Various local groups (including those with an interest in heritage, the built form and planning of Milton Keynes, sports and recreation, transport, and regeneration, and those representing people with a disability, wheelchair users and different religious or ethnic groups)
- National organisations (including the Environment Agency, English Heritage, Highways England, the National Housing Federation, NHS England and the Clinical Commissioning Group),
- Local agents, planning consultants, landowners and developers for key developments within the Borough, including the Milton Keynes Development Partnership
- Local businesses and employers, and the nearby universities
- Representatives from the voluntary and community sector, including the Community Foundation and Community Action MK
- Neighbouring Local Planning Authorities and Parish Councils
- Other services within Milton Keynes Council.

Across the four main sessions, around 150 individuals attended and contributed to the discussions. Each workshop covered the same agenda, as below, which included two group discussions and feedback to the wider audience.

The attendees were split into tables of 5-7 people, ensuring that a mix of interests was covered in each group to encourage a varied and lively discussion. Each table had a planning officer from the Development Plans team to help facilitate discussion and keep the delegates on topic and to schedule. The planning officers remained neutral throughout and did not contribute their own views, either personal or professional, to the discussion to try and keep the discussion free of constraints.

In addition to the table facilitators, there were also two lead facilitators from TransForm Places, an urban design consultancy, who hosted the events. Following an introduction by the Service Director for Planning and Transport, the facilitators from TransForm Places gave a short presentation about the importance of a planning vision and introduced the table-based discussion exercises. The agenda for each session ran as follows:

Plan:MK Vision Workshops - Programme	
Coffee/registration	15 minutes
Welcome and introduction to Plan:MK (Anna Rose, Milton Keynes Council)	10 minutes
Making a place-based vision Short introductory presentation (TransForm Places)	20 minutes
Introduction: Aims of the workshop and programme (TransForm Places)	10 minutes
Visions for MK: 1. Setting future aspirations for the City	30 minutes in groups
Visions for MK: 2. Mapping visions and priorities	40 minutes in groups
Feedback from groups Pin up your vision for MK	5 minutes maximum per group
Closing discussion Pulling ideas together and agreeing priorities to take forward into Plan:MK	15 minutes

As part of the agenda for the session, the facilitators laid down four “rules of engagement for successful visioning” which were intended to help people keep to the agenda and what we were trying to achieve. Those rules were:

- Keep it spatial – map it
- Keep it civil
- Keep it strategic
- Do talk to strangers.

During the first group session, each delegate was asked to write down their three or four priorities or ambitions for the future of Milton Keynes; what was important to them, or what they thought the big issues that would need to be addressed were. This was then discussed in the wider group,

and one of the delegates from the table acted as a scribe to note the points raised on a flipchart pad.

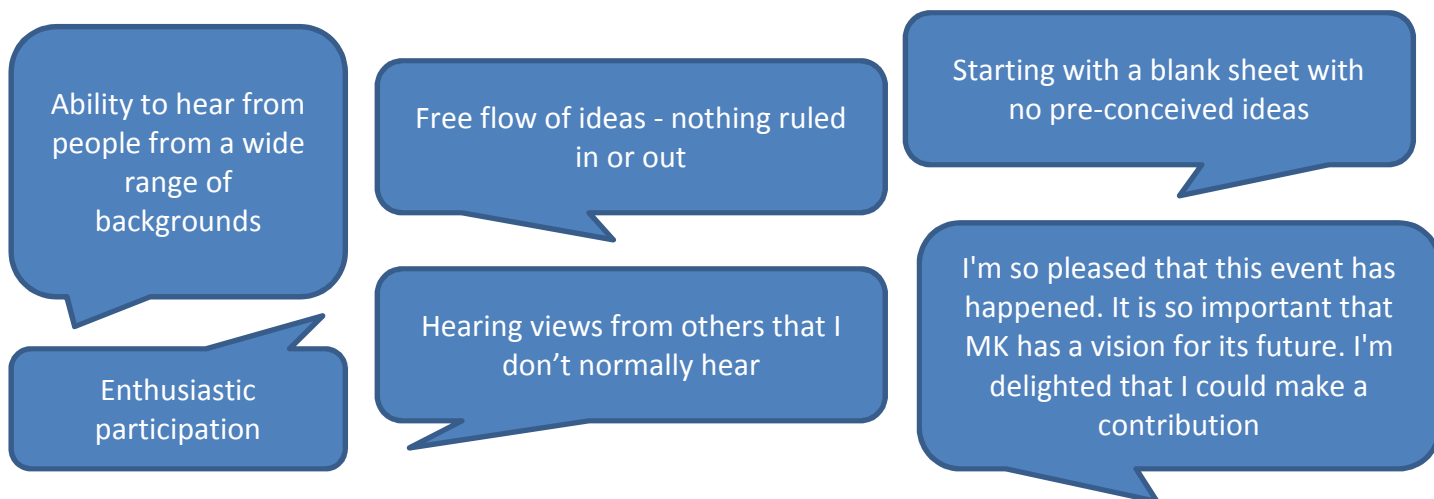
During the second group session, the delegates attempted to make these priorities and ambitions spatial, by plotting them on to a large map of the Borough. Delegates were encouraged to draw on the map, by marking up, for example, directions for growth or locations for new settlements or growth points; key linkages that could be built upon to support growth; new centres or areas that offered opportunities for redevelopment or regeneration; or ideas for how new development might look and what sort of infrastructure would be needed to deliver it.

At the end of the group discussions, each table presented back to the wider audience a summary of their conversation and explained what they had drawn on their map.

As part of the closing, the facilitators summarised some of the key points that had been raised, and all delegates were thanked for taking part in the event. All delegates were also asked to complete a feedback form which asked questions about whether they found the event useful; were able to make a contribution to the discussion; and if their table facilitator and the facilitators from TransForm Places did a good job.

The form also gave delegates the opportunity to identify more specifically the strengths of the event and what was most useful or enjoyable; which parts were least useful or enjoyable; and also if there were any other comments they would like to make but hadn't had the chance during the session.

The feedback through these forms and from other comments received at the events and afterwards was overwhelmingly positive. A full summary of the feedback is included in Appendix 1 of this paper, but comments included:



Using the outputs from the workshops

There were two main physical outputs from the workshops; the flip chart papers which set out the delegates' priorities and ambitions for the future of the Borough, and the large A0 sized maps which the delegates had drawn on to demonstrate how and where they thought future growth should take place. The intention was that these outputs would be used to inform the Strategic Development Options consultation document, with the flip chart papers being used to help draft

ideas for a long term Vision for Milton Keynes, and the mapping exercise informing the options for future directions of growth.

Preparing a Draft Vision

As discussed above, each table spent the first part of workshops discussing their priorities and ambitions for Milton Keynes and noting them down on flipchart papers. The intention was that these comments would help us to prepare ideas for a long term Vision for the Borough.

After the workshops, the points raised on the flip charts were transcribed to make them easier to deal with. The task was then to analyse and organize the comments from every session and to present them in such a way as to provide useful input to the visioning process. The difficult task was to retain the original 'voices' and substance of the lively debates yet still be able to see patterns and shared priorities emerging. We wanted to avoid misinterpretation of meaning as far as possible by including comments just as they were transcribed. We also wanted to avoid reducing complex ideas into over-simplistic single word labels.

As a result, the team systematically went through each comment, one by one. As we did so we started to cluster similar comments and ideas together. The results of this process are shown in the table in Appendix 2. The themes were not selected in advance but instead emerged from the process of grouping similar ideas together.

The list is ordered with the most frequently-mentioned ideas first to give a clear picture of priorities and shared preferences. Within some themes, sub-categories were formed where it was helpful but not in all cases. While all the titles chosen for themes and sub-categories could be open to question and change, we feel confident that the systematic process followed has allowed clear clusters of ideas and priorities to emerge.

The eight key themes that emerged from this process, and are considered in full in Appendix 2, are:

- | | |
|--|---------------------|
| • Transport and connections (including IT) | 97 comments |
| • Quality of life | 78 comments |
| • Vibrant economy and city centre | 68 comments |
| • Growth and change | 65 comments |
| • Housing, neighbourhoods and communities | 38 comments |
| • Original and new vision | 36 comments |
| • Identity of MK | 36 comments |
| • Resource efficiency and sustainability | 27 comments |
| • <i>Total</i> | <i>445 comments</i> |

Some individual statements from the flip charts contained more than one idea or issue. In these cases each element of the statement was counted separately in the appropriate theme.

Translating the Themes into a Vision

The next stage was to move from the group of statements to a series of bullet points that could act as a starting point for a Vision, that we can then publish for people to comment on, in order to further refine and improve it. As part of this, officers also looked at the previous Visions for Milton

Keynes and the comments received on the Topic Paper relating to this subject, “The Way Forward; Preparing a Vision and Development Strategy for Plan:MK” that had been consulted on in 2014.

Officers considered the themes above and the principles that emerged through these other sources, and condensed them into a series of bullet points that summarised the essence of the issues they covered. The result of this process is a short statement of eight bullet points. They cover similar themes to those listed above, although there is some overlap between them.

It was considered whether each bullet point should be supported by further explanation, to provide further detail to the sorts of issues and principles that were meant by that high level point. At this stage, it was considered that Plan:MK itself would be the way of providing that further description, through the objectives and policies that will be part of the Vision’s delivery. However, if through consultation on the Strategic Development Options and the further work that will be done on Plan:MK as it progresses through the plan-making process, it is decided that this additional detail would be useful to the interpretation of the Vision, then it can be added.

The Vision bullet points from this process will be included in the Strategic Development Options consultation document, and stakeholders will be invited to consider whether they think it is a fair representation of the priorities and principles that will be important to Milton Keynes into the future.

Preparing the Development Options

The second half of the workshops looked at how to transfer some of those issues onto a map of the Borough. Despite a wide range of stakeholders being involved across several different events, there were some directions of growth and options for future development that regularly came up through the mapping exercises. We wanted people to think about growth options without necessarily being restricted by environmental or economic constraints, to allow them to think more about which locations or scenarios would be logical, or could help to bring other benefits. This included disregarding local authority boundaries, so delegates were free to look outside of Milton Keynes Borough.

Officers reviewed the 28 maps collected from across the five sessions (including the young adult session), and the points raised have been summarised under the following headings. Scanned versions of the original maps are included in Appendix 3.

Directions of growth

All tables were generally supportive of growth, recognising the benefits that it can bring and the need to plan positively to make sure it is delivered in the most sustainable way. It should be noted that this wasn’t necessarily the view of all *individuals* attending the workshops however, as some questioned the need for continuing growth. The following locations were identified as having potential for future development:

- East of the M1 motorway, with one map suggesting this should extend as far as Warrington in the north of the Borough.
- New or expanded settlements broadly around Castlethorpe/Haversham/Hanslope, Cranfield/Moulsoe/North Crawley, Olney and Sherington. One group identified the enhanced role of these villages/towns, and as places with identity
- Salden Chase, to the south west of Milton Keynes (within Aylesbury Vale)

- Eaton Leys, to the south of the Milton Keynes, east of Fenny Stratford and Water Eaton (partly outside of Milton Keynes)
- A larger area, linking up Salden Chase and Eaton Leys into an arc of development around the south west of Milton Keynes
- West of the Western Expansion Area (the area now being developed west of the V4 between Crownhill and Stony Stratford)
- South and south east of Milton Keynes, including south of the railway line and around the existing Strategic Land Allocation near Wavendon and Wavendon Gate
- Greater focus or increased levels of development within Central Milton Keynes (CMK)
- Focusing development around existing district centres at Newport Pagnell, Kingston, Wolverton, Westcroft, Bletchley and Woburn Sands
- 'No go' areas identified by some north of Milton Keynes and East of the M1.

Green and Blue Infrastructure, and the Natural Environment

Many tables identified ways they would want to see green and blue infrastructure and the natural environment protected, enhanced or extended in the context of future development. Green infrastructure includes areas like the linear park network, strategic green spaces or the area covered by the Area of Attractive Landscape designation in the Ouse Valley in the north of the Borough and the Brickhill Woods in the south. Blue infrastructure in Milton Keynes includes the network of balancing lakes that are part of the city's sustainable drainage and flood attenuation system and also provide a recreation and ecological resource, plus the canal, rivers and brooks across the Borough. The following points were raised through the workshops:

- Protection of the Brickhill Woods and Ouse Valley, biodiversity/wildlife corridors
- Expansion and extension of strategic green spaces, in particular continuation of the linear parks into new development areas and beyond the Borough boundary
- Links to green spaces outside of Milton Keynes, including towards the Forest of Marston Vale
- The Bedford to Milton Keynes waterway, reflecting the safeguarded route through the Eastern Expansion Area
- Areas of ecological value within the urban area, specifically picking out areas including the Ouse Valley Park, Stanton Low Country Park and lakes north of the city, Linford Wood, Shenley Wood and Howe Park Wood. Areas of strong ecological value to be protected, with ecological links throughout the entire green network
- More trees within the urban area
- Green buffers around villages, specifically identified at locations including Stoke Goldington, North Crawley, Moulsoe and Bow Brickhill
- A green belt ring, or a green edge surrounding the existing urban area, to prevent urban sprawl (but not excluding potential development of standalone settlements or expansion of existing villages)
- Green space should be protected as long as it serves a use
- Open space needs to be joined up and integrated with neighbourhoods, including green links between grid squares
- Identification of 'destination' recreational and cultural parks (Emberton Park, Campbell Park, and Caldecotte, Willen and Furzton Lakes)
- Country park covering the lakes north of the city.

Movement and Connections

It was well recognised across the tables that a key part of the success of any new development will be how it relates to the transport network, and whether improvements are needed to transport infrastructure to cope with additional demand. As such, the following points were identified on the maps:

- Key stations identified at Milton Keynes Central and Bletchley on the West Coast Mainline, reflecting the interchange with the East-West Rail Link
- Potential new station identified at Castlethorpe on the West Coast Mainline
- Junction improvements at J14 in particular on the M1, plus the potential for a new motorway junction J13a close to Salford, and a new junction J14a north of the city, between Haversham and Gayhurst
- Improvements to the A422 and A509, including options for a bypass around Olney
- Retention and further extension of the grid network into new development areas, for all forms of transport
- Improvements to the A421, including improvements to the western part of the route outside of Milton Keynes Borough, and strengthening the route between the M1 and M40
- Options for a southern bypass to take east-west through-traffic away from the city
- Improved links across the M1 motorway towards Cranfield.
- The “floppy cross” primary bus route through CMK, using a rapid bus priority route or similar. Another table identified the points on the cross as tram terminals
- Integrated transport system in CMK and beyond, perhaps using the grid roads or considering light rail, underground, tramlines, a tram loop or a monorail/overhead system.
- Less dominance of Midsummer Boulevard as a transport hub
- Better links with the Stadium. Tramway through key destinations (linking up CMK, Hospital, Stadium and Bletchley station/East-West Rail)
- Integration of infrastructure and development, e.g. East-West rail and Bletchley Station
- Real time travel information
- Walkable neighbourhoods and improved community connections; estates designed to encourage local walking in all directions
- North-south regional connectivity, including with London Luton Airport
- More Park and Ride, with innovative transport solutions/corridor
- Community transport
- 24/7 transport in CMK
- Creation of a transport hub around Ridgmont; potential for an airport parkway station link to Cranfield and a Strategic Rail Freight Interchange. Expand Cranfield University.
- Electric car charging points across the whole city
- ‘Boris Bikes’
- Green bridges.

Regeneration and Redevelopment

Some tables also thought about what happens within the existing urban area, not just about expansion or development of new areas. These points included:

- Reduce the need for greenfield development by intensifying development and increasing densities, perhaps through taller buildings, but not using amenity space
- Opportunity to improve existing areas through regeneration. Some specific areas were mentioned, including Wolverton, Newport Pagnell, Stony Stratford and Stantonbury, and redeveloping the employment areas at Blakelands, Tongwell and Kiln Farm for residential use. Bletchley was also identified, with particular reference to the opportunity that East-West Rail will bring.
- CMK as an opportunity, perhaps increasing the level of development already planned here.
- Older estates surrounding the city centre were also identified as having some potential for regeneration
- Private sector-led regeneration of old areas
- Density in MK – higher, make the most of the existing city land.

Central Milton Keynes

The role of CMK was a key element in many of the maps from the workshops. Some of these recognised the role of Milton Keynes as a regional economic centre, with CMK at its heart. Others considered the image and identity of CMK and how that could be enhanced. Transport and connectivity issues for CMK have been included above under 'Movement and Connections', with other points raised including:

- Maximise the image and identity of MK (and CMK), reinforcing the heritage, landmarks and buildings, and distinctiveness of the city
- CMK as the cultural heart and focus for social interaction; opportunities for further cultural development, independent and niche outlets, a civic centre
- CMK as a focus for high-rise residential development, increasing the population while still keeping space for other city centre uses. Leave space for more housing over the next 50 years
- Create an urban buzz, with a 24/7/365 economy, a mixed community with day and night transport – not just a shopping centre
- Encouragement for CMK as a meeting place; more parking; outlets for creative uses; high value businesses; independent shops; supermarkets and food retailing; university and student accommodation
- CMK is tired and needs renewal; opportunities for creative regeneration through planned development/redevelopment of CMK
- Review of how the city centre works
- Better links with the station
- Promotion of CMK as a Regional Centre.

Retail, Community and Other Facilities

It was recognised by the workshop delegates that future development will need to be supported by the facilities and services needed by those living, working and spending time here. Therefore, when identifying new development areas, many tables included references to the sorts of uses that needed to be included as part of them or opportunities that development could bring. These included:

- Potential to create a new hospital near to Cranfield, perhaps to serve both Milton Keynes and Bedford.
- Existing hospital site providing specialist health, with other satellite services
- A university hub in Wolverton, and maximising links with Cranfield University
- Including a large local or district type centre as part of a major new development area to the west or east of the city to ease pressure on CMK and allow easy access to services and facilities (that doesn't rely on the use of a car) for residents
- Build up existing 'district centres'
- Facilities in all estates – easy access
- Clustering of community facilities, including schools
- Create cultural diversity with arts, sports and environment facilities in other areas of MK

Economy

The economy and employment issues were specifically raised on some tables, although economic development was implicit in the proposals of some groups.

- Economic competitiveness in the future
- Employment most important to spatial strategy, but village schools/shops still important to sustainability
- Technology park, close to M1 and Eastern Expansion Area

- Build links to Cranfield University with a business hub
- Maximise the benefit of East-West Rail; the 'brainline'
- Ageing infrastructure. Use the Tariff to fund infrastructure renewal throughout the city
- Encouragement of independent retailers and restaurants, e.g. to regenerate Bletchley
- High speed broadband. Cutting edge IT.

Design, and Other Points

There were many other points made on the maps, some of which relate to design aspects, sustainability, infrastructure provision, or the sorts of uses and facilities that big or successful cities have. These comments include.

- Estate design. Different offers in different grid squares, and increasing the mix in each grid square to support more integration and interaction
- Focus on getting isolated communities looking out and sharing/contributing to success
- Managing housing market, the mix and ownership, including council housing (this was particularly directed at the Eastern and Western Expansion Areas)
- Development should meet Lifetime Homes, high design standards, sustainable, social neighbourhoods, renewables, connected to nature. High efficiency standards for new homes, and upgrade older ones
- Communities, not places. Legible places. Not dormitories. Only works once community has established aspiration
- Time for a new 'Home World' exhibition
- Not 'more of the same', not just volume housebuilder type homes
- City-building type comments... the next 10 big things, e.g 2nd hospital, campus university, Olympic sized pool. Theme Park. A festival site
- Protect the identity and integrity of market towns and villages
- Northern heritage corridor, stretching between Stony Stratford, Wolverton, New Bradwell, Great Linford and Newport Pagnell
- Maintain quality of life in MK
- Future proofing all infrastructure
- Cooperation with other authorities.

Using the Workshop Maps

After collating the feedback from the workshops, and using the directions of growth elements as a starting point, a series of spatial options were drawn up. These maps do not pull together everything that was raised at the workshops as they would become too cluttered and difficult to read, but we wanted to pick out some of the key themes in terms of green and blue infrastructure, and movement and transport, and how they would interact with major new development. These maps will form the second part of the Strategic Development Options consultation document, with an explanation of how the development scenario could work, and some of the opportunities and risks that exist in bringing that development area forward.

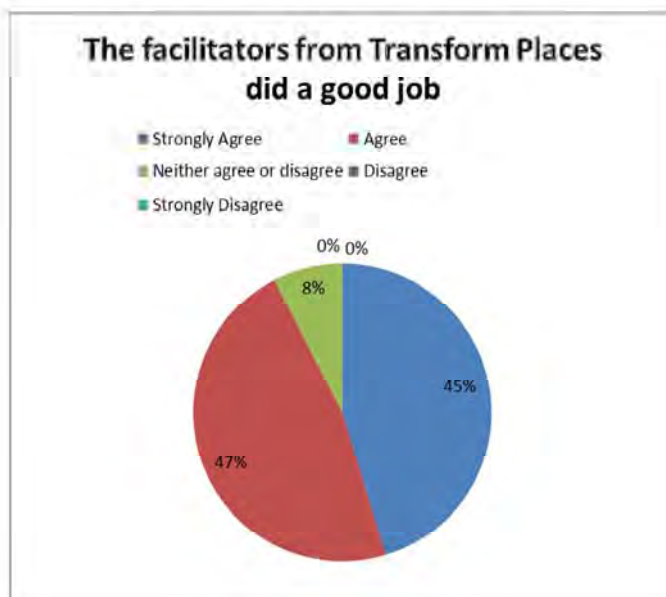
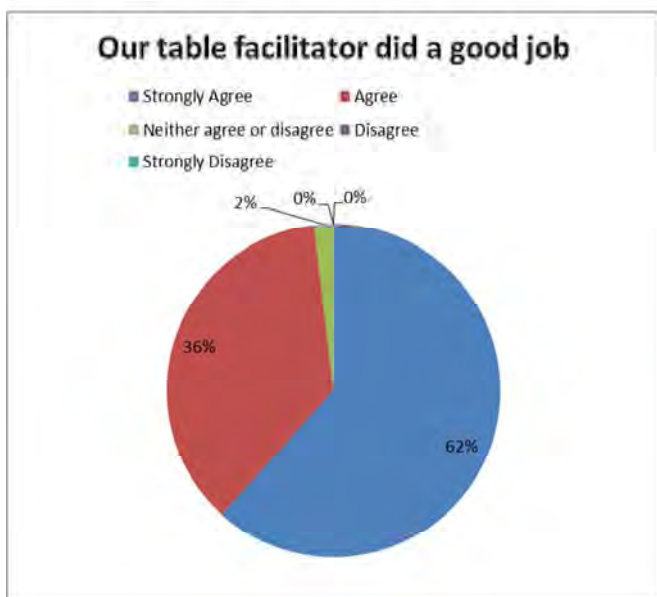
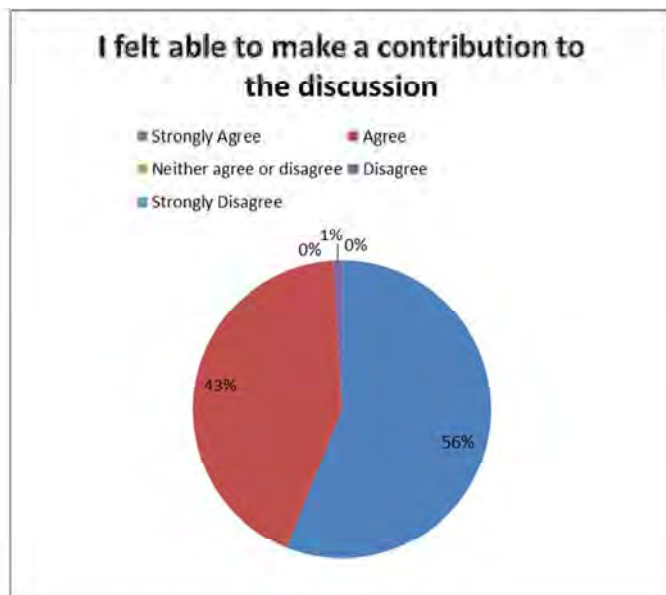
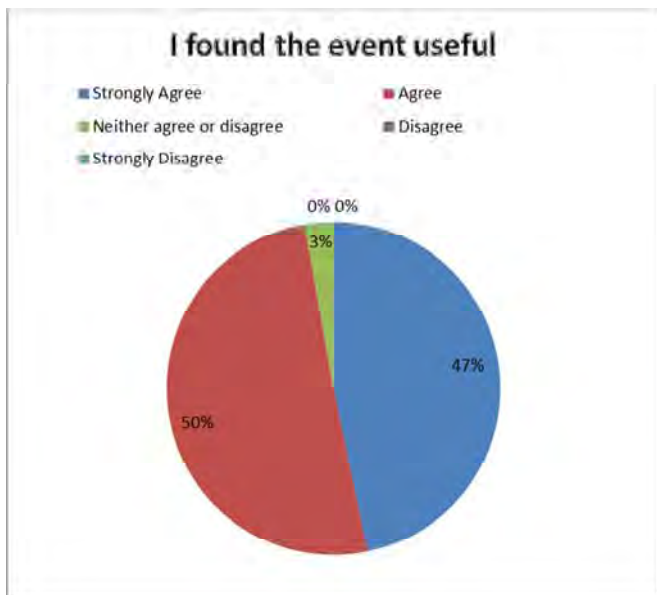
The document also emphasises that the areas identified are indicative, have not yet been assessed for their availability, viability or deliverability, and that development areas of this size will include a range of other uses and services, including areas of open space, but that this is not the stage to provide that level of detail.

The consultation document will ask respondents to consider what elements of each scenario they do and do not support, and which scenario they might wish to see brought forward as a priority, recognising that the final option to deliver a long term vision is likely to be a combination of two or more of those identified as potentials, although Plan:MK will just deliver the first 15 or so years of development.

The level of growth that the development scenarios would be aiming to deliver will be based on information from both our evidence base, and two studies in particular; the Strategic Housing Market Assessment (SHMA) and the Economic Growth and Employment Land Study (EGELS). The final housing target will be considered further through the Preferred Options stage, the next stage in the plan-making process. As the development scenarios shown in the consultation document will just indicate broad locations rather than specific areas with defined boundaries, the level of growth that could be delivered by each of them will be an estimation, to illustrate how they could each contribute to the overall figure.

Appendix 1

Feedback from workshop sessions



What were the strengths of the event? What did you find most useful or enjoyable and why?
- Interesting debate/viewpoints - have come away with greater knowledge of why/why not various solutions could be implemented - Interested in the infrastructure of transport - how can it be improved
A good start, well introduced and the context set
A good starting point and enjoyable - a lot to do still though
Ability to hear from people from a wide range of backgrounds
Ability to speak freely and in a good atmosphere and setting
Able to think and understand the demands on MKC. Facilitators kept us in line
Acceptance of growth and enthusiasm for it. Positive and variety of ideas, well articulated. Obtaining consensus at this type of event is impossible, but general themes, transport, land for recreation/green space, direction of growth (East of the M1) seemed prominent.
Adequate time to input - simple structure to the session which worked
All able to contribute. Good use of maps/diagrams
Allowed people to express unencumbered views
An opportunity to butt heads, have the difficult decisions, and begin the tough conversation about managing growth
An opportunity to express opinions
Breadth of views, backgrounds and interests Open discussion and stimulating ideas.
Bringing together different stakeholders
Brought diverse group together and creative thinking and views
Chance to meet MK officers and others
Commonality of ideas amongst a group of disparate people with different perspectives
Discussing the character of the place and creating communities. No specific expectations and absence of 'evidence' allowed for free-ranging conversation
Discussion and debate
Diverse groups, range of views
Each table produced a very different view of the issues in many respects
Easy to hear views of various people debated in small groups
Enthusiasm
Enthusiastic participation
Exchange of ideas
Format of discussion opportunities. Good length of time
Free flow of ideas - nothing ruled in or out
Free flowing ideas. Mixture of views
Free-thinking, no constraints, beyond boundaries. Inclusive, open, valued all contributions
Generally people very positive and responsive to the objectives of the session
Good discussion - lots of perspective
Good discussions Brief set and executed Very up-beat - enjoyed it!
Good format for contribution from participants
Good mix of people attending the event
Good positive engagement from a variety of people and organisations

What were the strengths of the event? What did you find most useful or enjoyable and why?
Good start - proof of the pudding is in the eating, re. consultation. Very poor track record to date.
Good to get breadth of discussion
Good to share many common views and concerns
Great feedback from each group. Good interaction between table members
Hearing views from others that I don't normally hear
Hearing views of people from all fields
I was surprised at the numbers of people at the event who are pro growth and are focussed on getting the right growth in the right places
I'm so please that this event has happened. It is so important that MK has a vision for its future. I'm delighted that I could make a contribution
Inclusive. Genuine round tables! Wide range of discussions
Informative, useful to hear other's passion and ideas
Interaction with group. Mix of organisations represented.
Interesting debate/learnt quite a lot that could be useful in developing our adjoining authority strategies
It is really refreshing to 'think big' again
Limited focus made it easy for all to participate
Listening to different ideas and merging synergies
Listening to the various viewpoints - each from a different direction
Listening to various ideas and understanding different peoples/ organisations visions for the city.
Meeting people from different sectors e.g. health, education, technology, property, and learning from them
Myriad ideas
Open and honest and flowed
Open to ideas
Opportunity for all to speak. Sharing ideas, enthusiasm and passion for the future development of MK
Opportunity to contribute. Opportunity to listen
Opportunity to hear a wide range of views from individuals with different backgrounds. Good speakers/ summarisers
Opportunity to think outside the box and to contribute my own opinions
Participative
Plain speaking but not acrimonious
Provided an opportunity to discuss what is important for the lifestyle of MK residents
Round table discussions
Seeing different visions and opinions of what makes MK unique
Small group discussion to develop and share ideas. Good mix of backgrounds/interests on the table
Starting with a blank sheet with no pre-conceived ideas
Strategic level thinking
Surprising degree of consensus among the informed - but need councillor and public education
The best things about the event were that the atmosphere was restrained, the people on my table (all men) gave me plenty of space to express myself (quite unlike the Midsummer Boulevard East workshops), that the people on my table were good company and that I was able to make useful contact with one of our Councillors (Matt Clifton).
The chance to contribute to ideas from others. Hearing the ideas of others
The group format allowed contributions to be made.
The open debate was very helpful, as was the willingness of all participants to listen to others ideas
The opportunity to discuss different views and understand other viewpoints

What were the strengths of the event? What did you find most useful or enjoyable and why?
The positive attitude to Milton Keynes; the opportunity for participants to contribute; an intelligent discussion; not too rushed.
To hear a wide variety of different voices describe visions for MK. To meet people with a passion for MK supporting a positive vision for the future. To debate and argue alternative futures, options and priorities. To learn more about MK. To understand better what people think is important about MK and specifically hopes for the future of hospital provision. To get some useful and positive feedback about hospital services.
Understanding the perspectives of different people/interest groups
Useful to hear the views of others
Very 'hands on' sessions and opportunity for everyone to contribute
Very useful discussion on wide regional aspects and around infrastructure
Views of others
Views of range of people with different expertise and knowledge. Table discussion
We reiterated yet again those elements identified in the last five such sessions delivered over the last ten years.
Well organised and structured Focused
Well organised Good group activities Well attended - mix of stakeholders Use of maps to talk around
Well structured activities/discussion
Well structured and an opportunity to discuss and talk
Well structured timetable and description of tasks to be undertaken Facilitator made few comments but guided discussion when necessary and made sure all had the chance to give views
Well-behaved groups!
While I was sceptical about the map it did help to focus and crystallise
Wide range of participant backgrounds and knowledge
Wide range of views expressed - this makes consensus difficult
Working as a group Map based exercise
Working together, sharing ideas and discussing diverse idea. Looking and contributing to defining MK

Which parts were the least useful or enjoyable? Why?
1. I think I would have 'heard' more from the community and not the politicians - they are greatly valued and perhaps should have been in listening mode.
2. You need to engage a more diverse group of people from the community ie. BME, older and younger
A bit more framing of conversation in pt.2 might have helped
A little bit of BS.
If you want to engage with communities, you need to talk in their language (not fluff)
All useful and enjoyable
At times the exercises were a little disparate. Blue sky vs reality tensions. Vested interests being pursued
Audio level - difficult to hear other speakers from the different tables
Blue sky thinking is a useful planning tool, however the reality of deliverability, funding and viability is key to any visions for growth and should form the basis/foundation
Could do more with structured rounds at start
Discussions went off-topic (e.g. detail on housing design) and not brought back quickly to topic
Diversity of the group was a REAL WORRY. No-one with a visible disability. One person from BME community. Women under-represented. This may need to be reflected on and addressed
Feeding back - lots of repeat commentary
Felt that some work was a bit 'micro' - feel that the physical plan needs to be the start as a framework for other issues
Following the group presentation comments from 'the floor' as so much had already been expressed by participants already!
Framing of question around space is problematic. Spatial design is a function of community identity and aspiration.
Writing on the map had limited use
Getting from the document to the map - fortunately we were helped
I found the event less than useful because it was another exercise in 'blue skies' thinking when the skies are clearly not blue and there are many real problems that need to be taken into account. I think all these events should be informed by facts that contributors should be given and asked to assimilate in advance and there should be more direction to the discussion. Another problem was being forced into mapping - just as in the MBE workshops. That was ok for one of the two points I made, about CMK, but not for what I wanted to communicate about 'communities'. It went down on our list but not I think clearly enough.
Nevertheless I have already made it on my submission so I'm not too bothered.
I had less to contribute to the specific location for development, but that was probably unavoidable
Insufficient focus
It depends on what comes out of it all. How do you find the common denominators and also allow for inspirational ideas and plans
It would have been nice to see a consolidated list of what seemed to be the consensus of opinion during the evening.
Lots of points from many people
Making aspirations spatial planning was far better
Most points lost in a sea of irrelevance
No explanation of overall context
No sound system. Unable to hear some presenters
None
None
None - all good
None - all sessions were useful
None - all useful

Which parts were the least useful or enjoyable? Why?
None really, just challenging finishing the place
Not enough time for mapping exercise. But it was enjoyable and interesting
Not knowing the area as well as some others I found the mapping a challenge and I'm not sure what benefit the maps provided other than a visual record of some of the outcomes of the first exercise. Many of the things people wanted to see in a future of MK were difficult to put on a map as they were about culture and use and not construction. I hope all these points are picked up by the team pulling this work together.
Nothing really!
People needed to be prodded more - perhaps by facilitators - to nail their colours to the mast. We all agree the big picture, but what does that look like on the ground
Perhaps there could have been a separate table for drinks, glasses etc - got in the way of maps, etc.
Politics under-lay; this is about making MK better and self-sufficient; perhaps a reminder at the start that this is about sharing ideas/concepts not personal agendas
Presentations
Questions at the end - too much self-promotion of individual views
Range of participants and views
Selection of photos for introduction, included a lost landmark (pond in Campbell Park) which tells a strong story in its own right :-) but why show photos of the Hub as an illustration of CMK becoming - quote - "a real city centre"?. The Hub is well known for being atypical of CMK and the antithesis of the masterplanned city and is not well liked. You seem to be imposing an outsiders' preconception of what a 'real city centre' looks like. Images very important so please choose with care, e.g. photo of market and people and our listed shopping building (truly an architectural landmark both locally and nationally) would be more useful than photos of Vizion and the Hub. Also, the cover of the whole Plan:MK document is of Places for People in Wolverton - nice in its way but not a tree in sight! Not a good choice for our city of trees. Otherwise, thanks for doing this
Some concern that a significant number of people seemed to link aspirations of growth without question or qualification
Some of the usual loud voices had a bit too much space - but this is hard to manage. We could have spent all day on this - so more time would be good
Table-based exercises
The coffee - instant powder!
The lack of A1 tracing paper!
The people mix was a little unhelpful: i.e. too white and probably a tad old.
Too broad - need additional forum to consider issues in more detail
Too short! Would have been good to discuss themes
Trying to put words into 'pictures'
Turning it spatial!

Do you have any comments that you would like to make, that you didn't get a chance to say during the session?
<ul style="list-style-type: none"> - Do want to attach importance to the need to analyse and understand the impact of alternative scenarios, their strengths and weaknesses, and at an early stage in this process - A comparative analysis of alternative growth models is required before arriving at one preferred option - We are poorly informed on the impact of advanced technologies, IT, transport, etc. There is more to it than being SMART!! This must be corrected and information fed into the process asap.
<ul style="list-style-type: none"> - Important to consider cross boundary issues - Duty to cooperate - Meeting unmet need of other areas where appropriate and needs be - Growth with MK boundaries - northwards
<ol style="list-style-type: none"> 1. The coming autonomous (low energy) revolution 2. Embracing yesterday's outdated collective transport (buses) unaware of what is possible for the future 3. An international concert hall 4. Re-drawing local authority boundaries 5. Reinvent multi-centre city 6. Substantial higher education and research developments 7. Maximising benefits of Oxford/Cambridge arc 8. A rail freight interchange
A long term 30-50 year vision plan is essential for MK to properly develop, as it gives certainty. Existing communities also need this 'certainty' so that they know where they stand as far as properly located and sustainable growth should go. Only a long term 50 year vision will provide this!
Any future developments need careful planning with an emphasis on being easy to use by the end users. We have seen other city developments where not enough thought has been given to end use which then causes problems which cannot easily be undone. For example a hospital development with one access road which causes such congestion on the hospital grounds bus services cannot enter during peak periods which means passengers and patients have to walk to catch the bus.
At another event, invite people in 20s-30s - they seem to be under represented
Concerned about assumption that MK must keep growing perpetually
Council bound to a degree to follow UNCRPD and Equality Duty to make sure disabled people have the same choices as others. There is currently no choice because accessible homes are not built in sufficient quantity therefore MK imposes on people where they live, which contravenes UNCRPD Article 9 and 19.
Emphasise the importance of delivering the communities that inhabit our estates. Too many lonely people and atomised families. More facilities which encourage people to relate together and function as a society, not a collection of individuals. Estates function as dormitories not communities - for health and wellbeing of citizens this must change.
Growth is good providing it is planned (see our Group 2 marked up map). Extend grid road system, redway system and green realm concept as per the original plan for MK. Many thanks The original design for the New Town of MK was superb - we must continue the original theme.
Happy contribution incorporated in feedback in the group
Housing aspiration is that we need housing for <u>all</u> MK people that is available/affordable/accessible. Housing disabled and families out of MK is not acceptable as a principle
How will we deal with some big issues ongoing, not necessarily covered by the aspirations covered today - e.g. WEA housing, Midsummer Boulevard East etc?
I did make comments about the historic environment of MK as key aspirations of the Vision that were recorded on our flip chart sheet but not reported back in our five minutes. Just to note and think about
I helped to build MK (telecoms). If tonight's ideas are muller over and perhaps applied then it will have been worth mine and others efforts back in the 70s. We have a good foundation - let's not lose it.
I want to understand better the overall process of development of Plan:MK. Meeting Fiona will no doubt fill this gap

Do you have any comments that you would like to make, that you didn't get a chance to say during the session?
Importance of hospital growth and location. Focus of university growth Get the structure in place. Focus on expansion of grid roads and continue to 'future proof'
Important South East Midlands context
Important to consider: - Ensuring any growth of economy of city as a whole doesn't get lost or bogged down by negative thinking - Skills match - housing/jobs balance kept in perspective - Not losing green city aspirations
In the interests of delivering a civilised city, grid road speeds need to be reduced.
Just to amplify the point I tried to make about this being value and community drive as a starting point rather than defaulting to 'place' immediately. I believe that appears to be the tack but just wanted to re-inforce that
Just to re-emphasise the importance of Milton Keynes being as accessible and disabled friendly as possible.
Keeping <u>people</u> at the heart of plans
LIFE TIME HOMES standards are absolutely essential to the adequate housing planning of any expanding town/city. Milton Keynes is in a powerful position, developers want to build here - we need to set the standards of building standards in the best interest of our diverse and ageing population
Looking forward to the vision commission that expands this further
Lots!
Maybe trialling a 'living lab' in MK
MK has always been innovative in the way it has managed development. I would like to see this continue - we should not project forward on current structures. There is no reason to assume that MKC will continue in its present form. We need different structures based on <u>proper</u> partnership working (not symbolic relationships) - resources must flow through such partnerships (in areas such as health, education, housing etc)
MKC Planning Authority and MKC Cabinet need to remove the Article 4 Direction preventing the growth of new HMOs in Milton Keynes. They are a much needed and sought-after form of high-density accommodation and are often the only affordable option for people on a low income. Local businesses that rely on non-professional/low income workers (bars, restaurants, warehouses, etc) are already affected by the Article 4 Direction and it will stifle the ability for MK to continue to grow and attract more of these businesses as our population grows.
Much more to say but inevitably can't say it all at one session!
Need serious workshop with lots of councillors involved to review what works and what doesn't work about the original aims and design principles. Most officers don't have long enough experience
Needed time to discuss main issues in more detail
No
No – it was a long session and I think we all had time to have our say, although there wasn't time to prepare a proper presentation to the wider group and some points we discussed weren't covered.
Not quite sure of status of output, i.e. is it like the Local Plan with fixed term?
Please contact me if I can help with anything related to housing/affordable housing. Thanks for inviting me
Please invite me to the next event
Please link to other strategies - Physical Activity Framework - Cycling/Active Travel Strategies - Sport and Active Lifestyles We need to drop the identity of being England's fattest city.

Do you have any comments that you would like to make, that you didn't get a chance to say during the session?
Probably loads but I hope that the main messages of the event are translated into the Plan: there have been too many similar events over the last 10 years where, regardless of what is actually said, the outcome is always "lots more housing". Good luck.
Respect and don't engulf existing villages/communities. Then politicians took over!!
Specific subject workshops would be useful 1. Transport (and land use planning) 2. Housing 3. Education 4. Health 5. Employment 6. Community development
There is a point I didn't dare make and haven't made on my submission because I've come to it more recently after doing more reading and thinking. It was touched on in our group in relation to the difficulties in attracting GPs to the area and in the plenary in relation skills shortages more generally. The truth that I dare not speak is that MK's history is thoroughly grounded in the socialistic principles of new towns and therefore MK is not a sufficiently attractive place to live for those who are looking for what I can only describe as a more 'classy' environment (mostly associated with a history that by definition we do not have). One element of this is culture, which is bound to be a product of what people want, so that's a chicken and egg situation. Another element is education. We do have some quite good schools but few that the elite would want to send their children to. A proposal that I did insert on our chart was for a school that offers the international baccalaureate, which might usefully be situated in CMK to be accessible from all parts of the city. I mentioned to my group (and separately to Edith Bald) that we might seek the backing of Buckingham university to set up an academy. University College London has done that in London and it's an idea being encouraged by the government. A private school might be another option but I don't think there's the market for it - another chicken and egg situation. Is there any example of a new town that has managed to lose its 'large housing estate' feel? One contribution (all the transport routes) left me with the sad idea of acres of indistinguishable houses, warehouses and lorry parks.
These comments were noted, however the strength of the city centre needs to be protected to ensure investment continues and people visit and use the Town Centre in light of increasing competition. Need a mix of uses
Very good effective workshop :-)
Vision - PEOPLE - the community strategy should drive Plan:MK, not the other way round, please. This is about equality and opportunity for all people, and regeneration must be part of this.
We look forward to continuing work on the future vision and its detail
We need to expand the debate to the people of MK with simple lists of MK qualities for approval or otherwise, e.g. grid roads - good/bad and then make a list of things with a red-line principal, which cannot be crossed.

Appendix 2

Outputs from Workshops Part 1 – Themes emerging from the flipchart sheets

Statements (All groups/dates)	No. if > 1	Total for theme
NB (???) added where meaning/intent of comment is not clear		
<p>ORIGINAL and NEW VISION</p> <p>Protect/refresh original vision and understand the original design for MK: Green city: Green spaces; grid roads; landmarks; concept of space on the estates; tree lines and heights of buildings (7)</p> <p>Original principles and character observed; continue grid roads/green corridors/redways (5)</p> <p>Vision to be led by MK (3)</p> <p>Protect unique characteristics of MK (2)</p> <p>All citizens thrive (2)</p> <p>Aim to become a city/Top 10 city (2)</p> <p>A better masterplan for new development led by MKC, based on original concept (2)</p> <p>Strength as regional city</p> <p>Flexibility of approach in applying core design principles</p> <p>Need a wholesale re-vision of city centre (Terry Farrell work)</p> <p>How to develop the grid?</p> <p>Re-designation of new city</p> <p>A model city – sustainability, functionality and service provision</p> <p>“Living the dream” - participation and engagement</p> <p>United aspirations</p> <p>Start with communities</p> <p>Community and neighbourliness/opportunity to interact</p> <p>Good communication</p> <p>A young city</p> <p>Next 10 big things</p>	<p>7</p> <p>5</p> <p>3</p> <p>2</p> <p>2</p> <p>2</p> <p>2</p>	<p>36</p>
<p>QUALITY OF LIFE</p> <p>General quality</p> <p>Only the best will do (3)</p> <p>Maintain quality of life for residents/Live, work & play - Fun! (3)</p> <p>Put quality before growth</p> <p>Opportunities and choice</p> <p>Don't want to reduce freedom (??)</p> <p>People are social animals</p> <p>A well-supported and thriving voluntary sector</p> <p>Green spaces and infrastructure</p> <p>Protect/maintain quality of green infrastructure and spaces (7)</p> <p>Maintain existing green spaces – build around them not erode them (7)</p> <p>Maintain ecology and eco-corridors (2)</p> <p>New linear parkland (2)</p> <p>Better understanding of drainage system and relationship with green spaces (2)</p> <p>Quality of facilities and services</p> <p>Quality of services/facilities: Education, training and university, health,</p>	<p>3</p> <p>3</p> <p>7</p> <p>7</p> <p>2</p> <p>2</p> <p>2</p>	<p>78</p>

<p>culture, sports and jobs (13)</p> <p>Great education for every young person – tie up with jobs and careers (2)</p> <p>Promote physical health, access to parklands (2)</p> <p>Community Foundation research: Green city/city in a forest for physical and spiritual health (2)</p> <p>Health needs of an ageing popn – are hospital facilities adequate? (2)</p> <p>Models for health care provision: 1 big hospital and/or satellite hospitals or 2nd hospital? (2)</p> <p>Live/work balance and arts/culture balance (2)</p> <p>Aspiration to be the healthiest city in England</p> <p>Population density and its impact on health provision.</p> <p>Safety</p> <p>Safety and security in neighbourhoods, city and villages (5)</p> <p>Safety on roads, redways and rail (2)</p> <p>Rural/urban balance</p> <p>Respect and embrace rural areas, their heritage and environment /Villages to stay as villages (3)</p> <p>Urban-rural mix, balance/ Mutually beneficial relationship (2)</p> <p>Design and building quality</p> <p>Need more variety in design of new development (2)</p> <p>Nationally and locally important buildings of architectural significance, recognized and appreciated: Conserve/enhance – to be enjoyed and celebrated (2)</p> <p>Assimilating and integrating new communities. More recent developments have not created a sense of community (2)</p> <p>City of firsts and cutting edge architecture</p> <p>Design and build quality</p>	<p>13</p> <p>2</p> <p>2</p> <p>2</p> <p>2</p> <p>2</p> <p>2</p> <p>2</p> <p>2</p> <p>5</p> <p>2</p> <p>3</p> <p>2</p> <p>2</p> <p>2</p> <p>2</p> <p>2</p>	
<p>TRANSPORT AND CONNECTIONS</p> <p>High level principles and preferences</p> <p>An integrated, high quality & sustainable (public) transport system, accessible for all and ease of movement around the city at diff. times of day/night (24)</p> <p>Access for everyone/inclusive (7)</p> <p>Connectivity/ linkages and legibility are critical (6)</p> <p>Walkable/cyclable city (6)</p> <p>Deliver adequate infrastructure and I before E to support/before growth (5)</p> <p>Importance of E-W rail/ other major infrastructure delivery (eg. HS2) to capture growth (5)</p> <p>Better connectivity to rural areas/local towns/villages (5)</p> <p>Use innovation infrastructure & technology to achieve this (“we don’t necessarily need big vehicles”) (4)</p> <p>Maintain grid system (4)</p> <p>Change from being a car-centric city/Reduce reliance on car but keep ease of movement/Introduce innovative ways of getting around (3)</p> <p>In a city designed for the car people will not give up freedom of car – particularly with current ‘fudge’ of public transport provision</p> <p>Cutting edge communications/ Next generation IT connections</p> <p>Specific proposals/ideas</p> <p>Transport authority for MK (2)</p> <p>Improve bus frequency/Bus routes to go where people want them not where operators want to go (2)</p> <p>Maintain and improve both internal and external road and rail access (2)</p>	<p>24</p> <p>7</p> <p>6</p> <p>6</p> <p>5</p> <p>5</p> <p>5</p> <p>4</p> <p>4</p> <p>3</p> <p>2</p> <p>2</p>	<p>97</p>

<p>MK as link between M1 & M40/A421 super highway (2)</p> <p>Autonomous vehicle revolution (2)</p> <p>Parking – P&R/ Additional P + R west of city (2)</p> <p>MK as key link between Oxford and Cambridge – heart of the ‘brain line’</p> <p>Major arteries OK within city but need connections east of M1</p> <p>Extend Monks Way</p> <p>Strategic transport needs of city and County</p> <p>Provide choices of travel</p> <p>Redways need better signage</p> <p>Green street scenes</p> <p>Underpasses and redways – high quality commuter network from the start</p> <p>Fewer cars in 50 years</p> <p>Tramway system</p> <p>Parking/driving on estates based on nos. of cars/households (??)</p> <p>Has 3 stations (??)</p>	<p>2</p> <p>2</p> <p>2</p> <p>2</p>	
<p>RESOURCE EFFICIENCY & SUSTAINABILITY</p> <p>Smart city: Green technology & sustainable (7)</p> <p>Efficient use of resources to enhance self-sufficiency (3)</p> <p>Green MK at all stages of development and all types: environment/water/carbon storage (3)</p> <p>Encourage sustainable and intelligent/alternative modes of transport (2)</p> <p>A low carbon/carbon neutral city (by 2035) (2)</p> <p>Sustained growth</p> <p>Financially and environmentally sustainable development</p> <p>Responsive to change/ flexibility of development</p> <p>Continue SUDs system</p> <p>Leads on sustainability in construction standards</p> <p>More (visible?) renewable energy</p> <p>MK by continuing environmental, low- carbon design and promoting energy efficiency</p> <p>Future proofing</p> <p>Aspirations of future generations/Ability to own property/employment prospects/healthy lifestyles/local communities/growth and infrastructure</p>	<p>7</p> <p>3</p> <p>3</p> <p>2</p> <p>2</p>	27
<p>GROWTH and CHANGE</p> <p>Attitudes: For growth</p> <p>Partnership with neighbours – supportive, not detrimental /Neighbourly – co-operate with adjacent settlements and sub-region (4)</p> <p>Appropriate growth levels/meet housing need (4)</p> <p>Managing and delivering cross-boundary growth: Are Borough boundaries appropriate? Can we combine with other authorities (3)</p> <p>Growth to benefit all – not growth at any price (3)</p> <p>We need to grow! More opportunities linked to expansion – equality, leisure, jobs etc (2)</p> <p>Dispersed activities/Polycentric pattern of MK (2)</p> <p>Expansion/continuity of growth – how much? (2)</p> <p>Retain the best of a small city while becoming a big city</p> <p>Improve what we’ve got OR double size to 2050.</p> <p>MK in wider context of neighbouring towns</p> <p>Growth of other settlements linked to MK aspirations</p> <p>Exponential growth (???)</p> <p>Remove barriers to growth</p> <p>Boundary-less</p>	<p>4</p> <p>4</p> <p>3</p> <p>3</p> <p>2</p> <p>2</p> <p>2</p>	65

<p>Attitudes: Against growth Existing commitments: within boundaries not indefinite expansion/will run out of land (3) ‘Enough is enough’/ No sprawl – protect the boundaries/MK should have a stop (2) Why grow? Establish ‘red lines’ not to be crossed eg M1/Ouse Valley</p> <p>Directions/models for growth Expand MK into rural area but also regenerate existing areas/expand in gaps in the grid (2) A ‘new’ new town: Deliver a new settlement in the Borough (2) A Garden City Coherent spatial pattern: A combination of regeneration, integrated ‘edge’ development and stand- alone satellite settlements Growth models: develop new areas v regeneration of existing areas Do we want to go beyond M1 or is it a barrier? A bigger, more vibrant MK: Growth to east of M1 Local clusters (??) ‘Loose’ expansion incorporating parkland – satellites and villages eg Olney MK as core city but villages treated equally</p> <p>Density Bigger, denser, taller (3) High density but MK style (NB Need to understand what this is) (2) Maintain density: Options are ‘out not up’ or ‘up/down not out A more sustainable, denser & more contained city (but not disproportionately faster than other places)</p> <p>Plan:MK and demographic changes Plan for demographic changes – young, middle age and elderly – but partic plan for ageing population (4) Increase population Population – no growth? Planning practice – take account of past successes MK2 – a 50 year plan for managing growth: Reduce landowner/developer strength and release more of this money for infrastructure At moment no 20 year vision. Success comes from acquired land/compulsory purchase rather than ad-hoc bolt ons Understand planning and longer- term visions Listen to ordinary people and what matters to them</p>	<p>3</p> <p>2</p> <p>2</p> <p>2</p> <p>3</p> <p>2</p> <p>4</p>	
<p>HOUSING, NEIGHBOURHOODS and COMMUNITIES Affordable housing / homes for lower income families (8) Diversity of housing/ Cradle to grave housing/Right homes right place (5) Lifetime homes standard: Completely accessible from the outset and adaptable over time (5) Great housing/attractive and built to last (3) Audit of MK estate by estate – learning from the past and celebrate innovative housing history (2) Size of homes Higher density housing Space for housing growth</p>	<p>8</p> <p>5</p> <p>5</p> <p>3</p> <p>2</p>	<p>38</p>

<p>Use attraction to housebuilders to negotiate what’s needed and insist on high standards More housing for the homeless Student town (???)</p> <p>Neighbourhoods and diverse communities Neighbourhoods (several areas linked) to have a range of facilities, leisure, schools, employment, housing, health - the MK polycentric city (2) Leisure and community facilities - hubs easily accessible locally (2) Create communities Grass roots culture – arts and entertainment Maintain neighbourhood principle – aim for 3000 people More diverse communities – link to affordable housing? Communities, movement – locational (???)</p>	<p>2 2</p>	
<p>VIBRANT ECONOMY & CITY CENTRE Borough economy Continues to attract people and businesses/ Needs to be open to people (5) Attract investment/ Create jobs & local employment (4) Attract start-ups/R&D/service industries (4) Make a cultural destination eg Campbell Park/Improve cultural centres (3) Encourage people and companies to stay (3) Vibrant balanced economy (Size/sector/type – national and local) (2) Become the predominant economic, demographic centre in SE outside London/competitive compared to other UK and international cities (2) Strengthen our economic position/prosperity (2) Living wage city (2) Innovation hub/Community ‘business’ centres (2) Role of University in innovation/R&D (2) Maximise E-W links with Cranfield and Oxford & Cambridge (2) Shared economic prosperity/address in-work poverty A young city Aligned skills and growth strategy Aim to be a top destination for top companies and employers Unique and not available on-line More business -friendly The original and new (major) centres around the city need maintaining and developing. Meeting economic needs of the city and region Culture, heritage and leisure More open to compromise on finance solutions (??) People change jobs not houses as there are no jobs for life High employment – minimum dependence on benefits Net inflow of traffic (journeys??) to keep economy going Income for the Council – retain business rates Lack of employed – unskilled labour (???)</p> <p>CMK More diverse and unique shopping outlets/More independent stores/restaurants and evening economy in city centre. Need encouragement and support (4) Promote CMK as regional centre/Aspiration to become a destination - a ‘go to’ like Bicester (3) CMK is a shopping centre not a city centre (2)</p>	<p>5 4 4 3 3 2 2 2 2 2 2 2 2 2 2 4 3 2</p>	<p>68</p>

<p>What's the retail draw to MK and what will add value to improve growth/development? (2)</p> <p>Opportunity to redevelop/enhance CMK (2)</p> <p>Destination of excellence for everything</p> <p>Complete CMK</p> <p>Future of CMK city centre prioritized</p> <p>Define 'stop line' – possibly defined by CMK</p> <p>Move away from CMK and create new centre(s)?</p> <p>Need more diverse culture, local producers</p> <p>Need a civic centre and a soul centre</p> <p>Add to existing attractions – MK Dons and Snodome</p>	<p>2</p> <p>2</p>	
<p>IDENTITY OF MK</p> <p>Innovative city - build on the past. Passion for innovation and new technologies/Test bed for new technologies for transport and living (5)</p> <p>Prioritise national significance/ International sporting city/ HQs of businesses/R & D (3)</p> <p>Strong sense of community – proud to live in MK (2)</p> <p>MKC should lead not follow. Not the same old stuff. Celebrate being different and build on it (2)</p> <p>Welcoming and inclusive – attracting new people and visitors (2)</p> <p>Encourage greater diversity people and places/ age/ethnic background (2)</p> <p>Need health/education/social and cultural facilities to be a city/regional city/international city (2)</p> <p>Perceptions of MK and its personality</p> <p>Understand MK's roles and relationships with the outside world</p> <p>Understand what we have got</p> <p>City of opportunity - entrepreneurial</p> <p>Unique/distinctiveness</p> <p>Re-inforcing positive identity</p> <p>Achieve city status</p> <p>Respectful of the past but not allowing the past to define the future</p> <p>"Can do" attitude</p> <p>Sense of belonging</p> <p>Be ambitious and achieve ambitions</p> <p>MK losing its character: It was a barrier-free city and losing landmarks</p> <p>A place with identity: Town/city/regional centre. Facilities must be matched to the identity (eg. hospitals/sports provision etc)</p> <p>Local communities/identity</p> <p>Reputation for innovative, co-operative leadership</p> <p>City in a rural location</p> <p>City that is cosmopolitan, cultural, multi-cultural and trendy</p>	<p>5</p> <p>3</p> <p>2</p> <p>2</p> <p>2</p> <p>2</p> <p>2</p>	<p>36</p>

Appendix 3

Outputs from Workshops Part 2 – Maps of Milton Keynes

Plan:

Vision Workshops Original Maps

- Session 1 – Thursday 26th March, 10am
 - Session 2 – Thursday 26th March, 2.30pm
 - Session 3 – Friday 27th March, 10am
 - Session 4 – Tuesday 11th June, 6pm
- Young People's session – Thursday 9th April, 12pm

Facilities in all areas - easy access

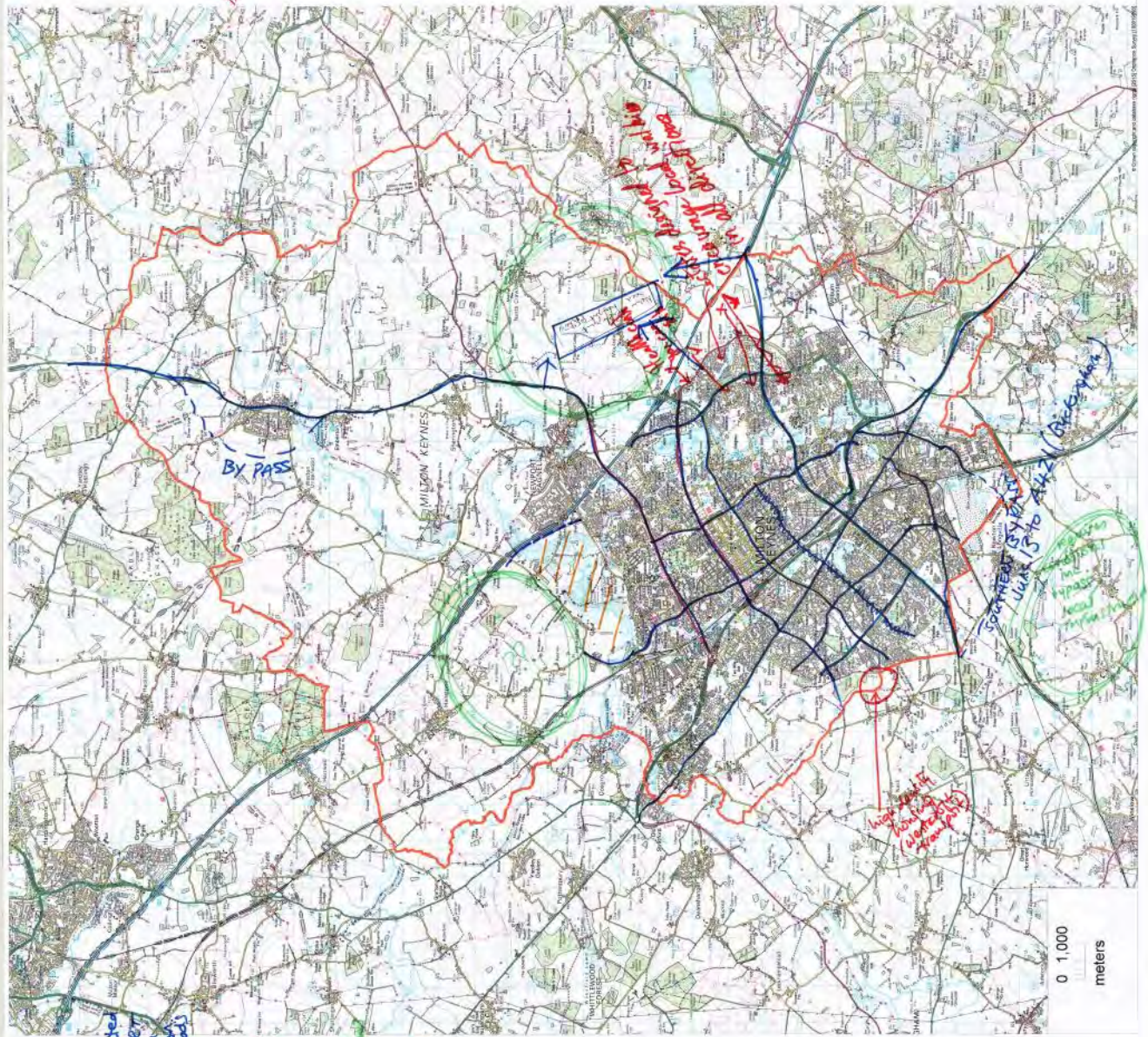
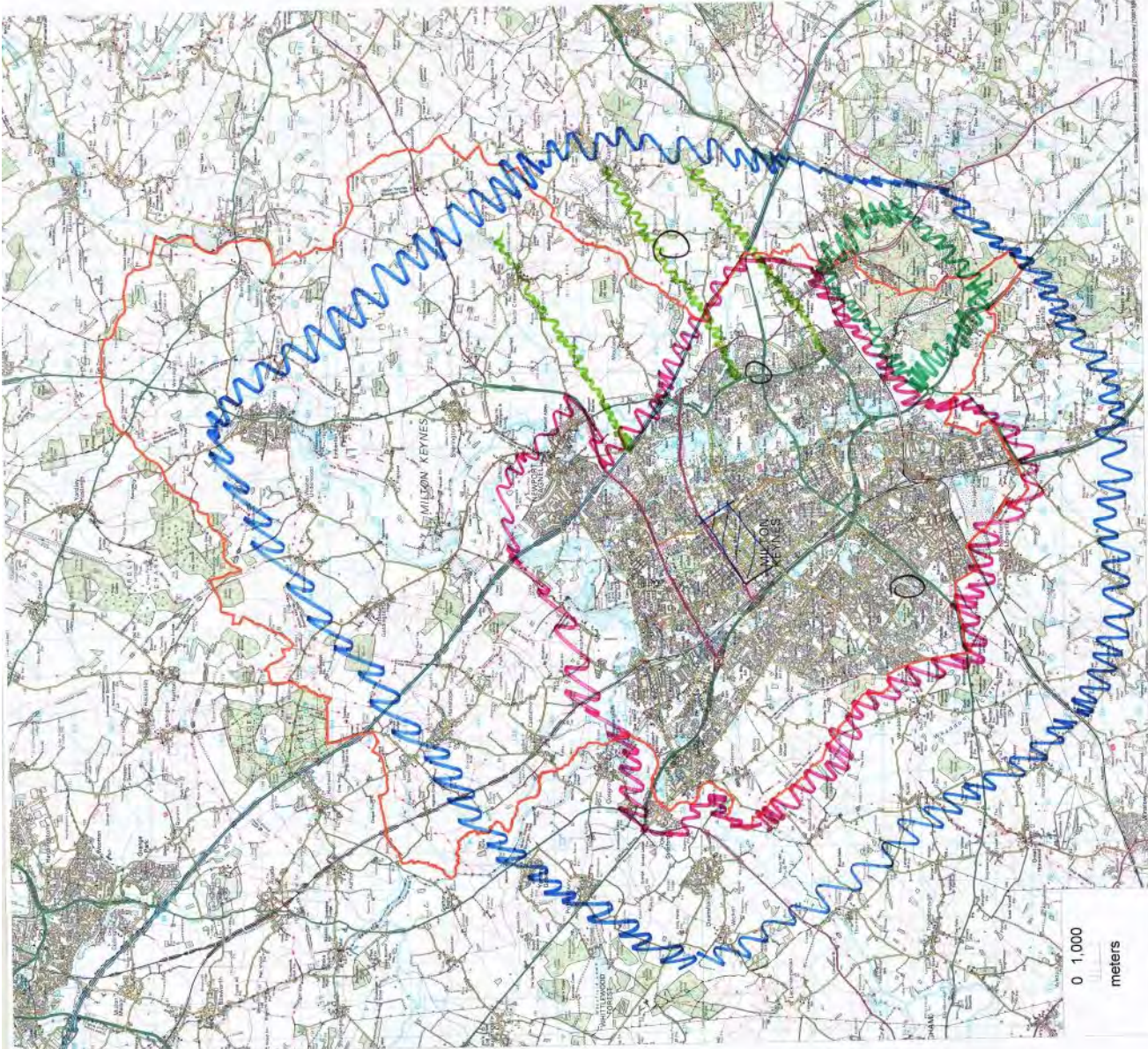


Table
 (A) (A1)
 Integrated Transport System based on bidirectional roads

• Estate design
 Green
 Caution point

0 1,000 meters

THUR AM
Group 2

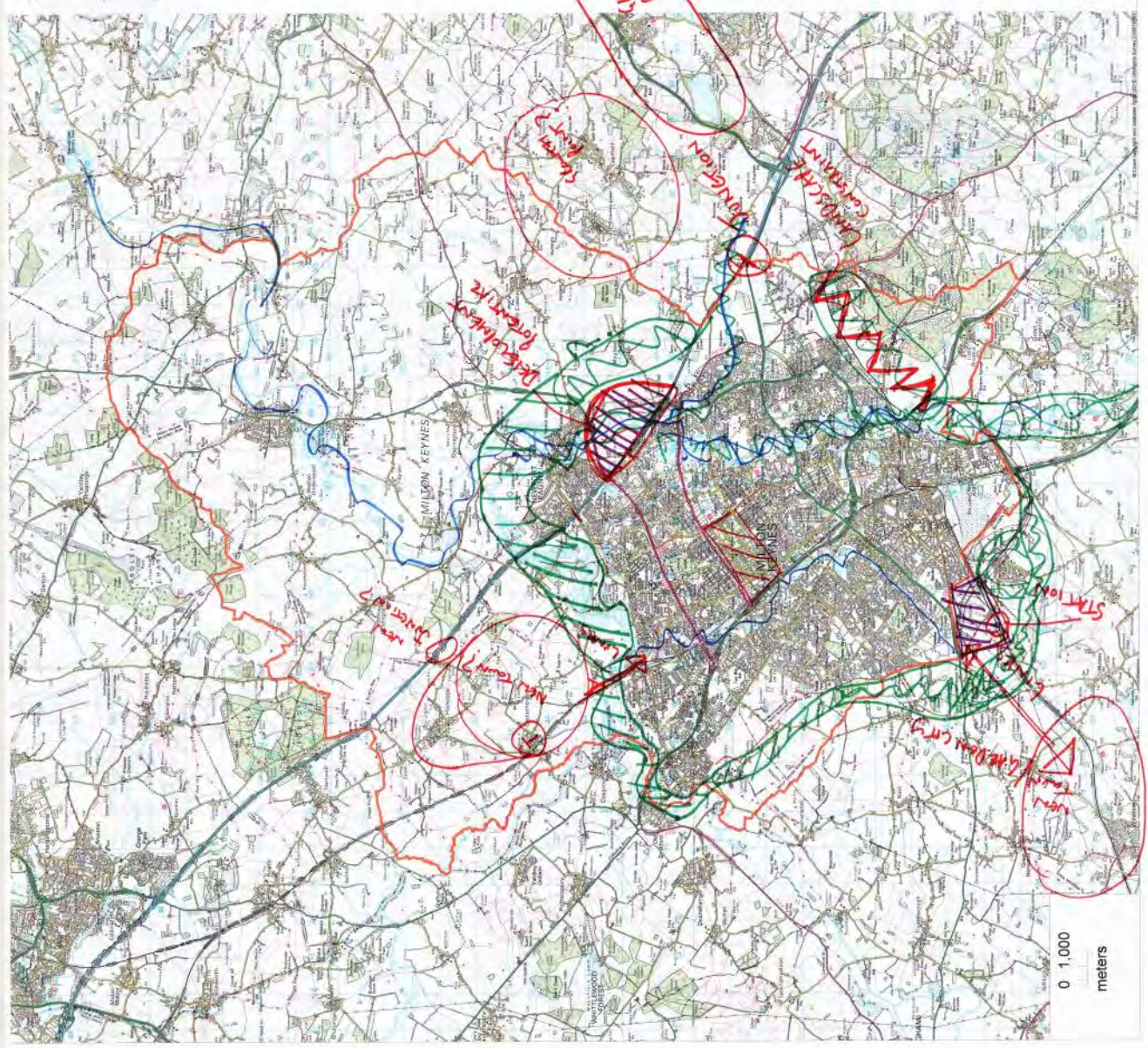


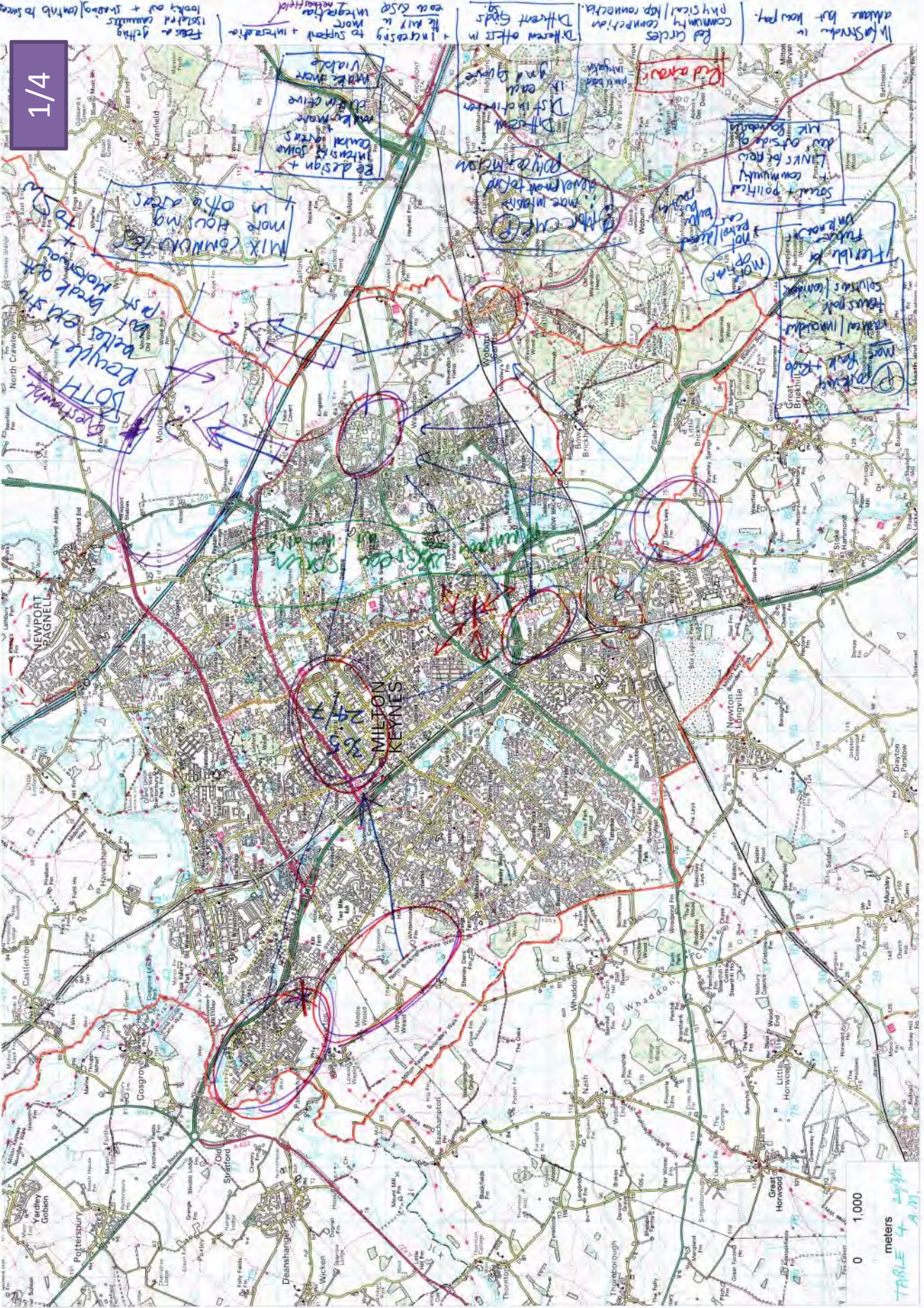
- Future of city centre
- Super local centres
- Extension of grid system
- Inner MK (250k)
- Greater MK (100k)
- Bow Brickhill remains rural

GREEN EDGE ESTABLISHED

- GREEN BUFFERS FOR VILLAGES
- TRANSPORT SOLUTIONS FROM GROWTH POINTS (NEEDS INVESTING)

TABLE 2 MEANING SESSION





1/4

It's striking in
admission but how pay.

Red circles
community connection
physical/top connections

Different office in
the way it's more
with a mix of
to support + interaction
look out + strategy/containing business

social + political
community
LAVC is a new
div of side of
Milton Keynes

Red circles
community connection
physical/top connections

Different office in
the way it's more
with a mix of
to support + interaction
look out + strategy/containing business

flexible for
future
not planned
more
office space

flexible for
future
not planned
more
office space

flexible for
future
not planned
more
office space

flexible for
future
not planned
more
office space

flexible for
future
not planned
more
office space

flexible for
future
not planned
more
office space

flexible for
future
not planned
more
office space

flexible for
future
not planned
more
office space

flexible for
future
not planned
more
office space

flexible for
future
not planned
more
office space

flexible for
future
not planned
more
office space

flexible for
future
not planned
more
office space

flexible for
future
not planned
more
office space

flexible for
future
not planned
more
office space

flexible for
future
not planned
more
office space

flexible for
future
not planned
more
office space

flexible for
future
not planned
more
office space

flexible for
future
not planned
more
office space

0 1,000
meters

TABLE 4.20

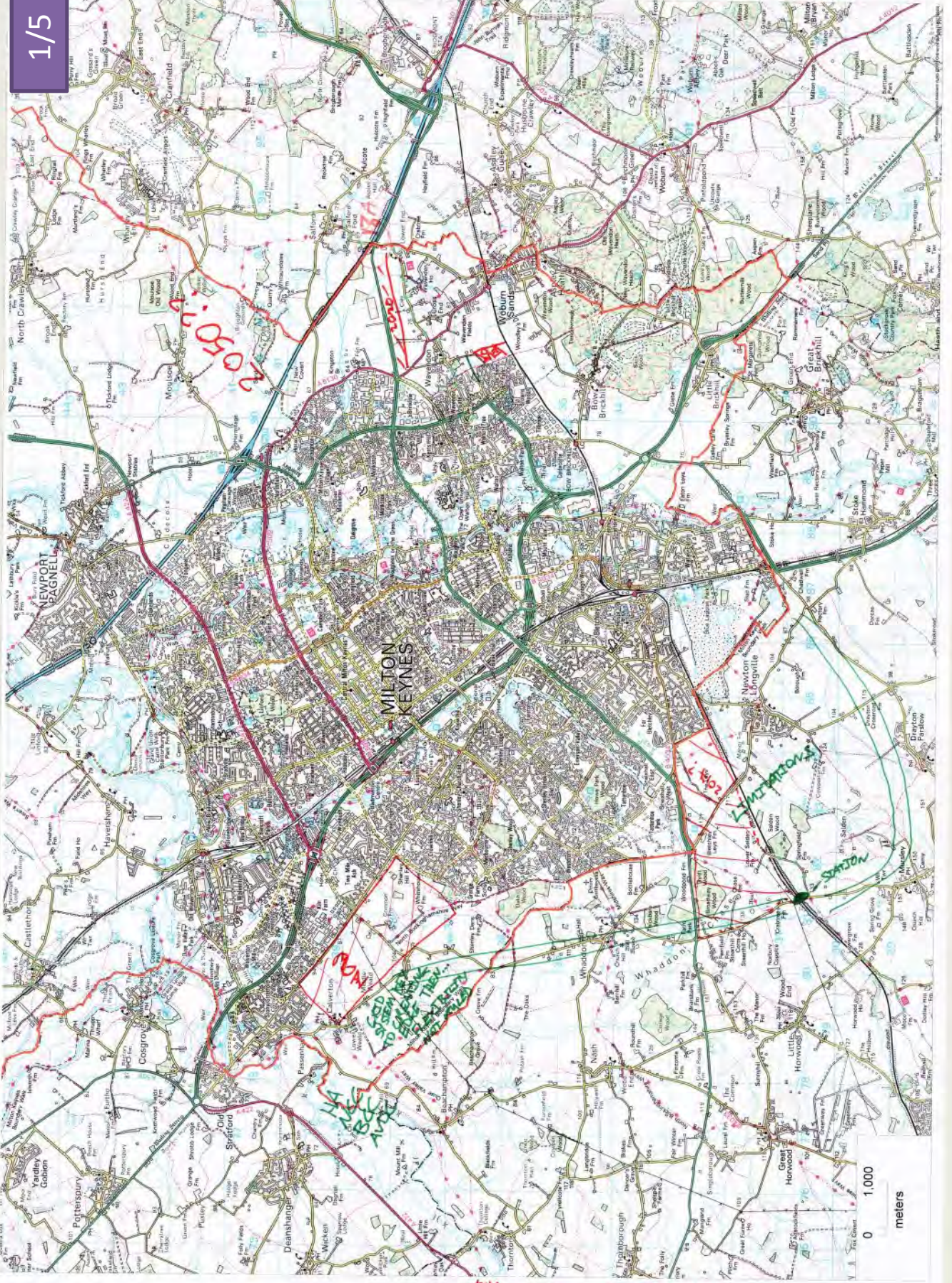


Table 6
Thurs. am.

GLUE - that make communities work

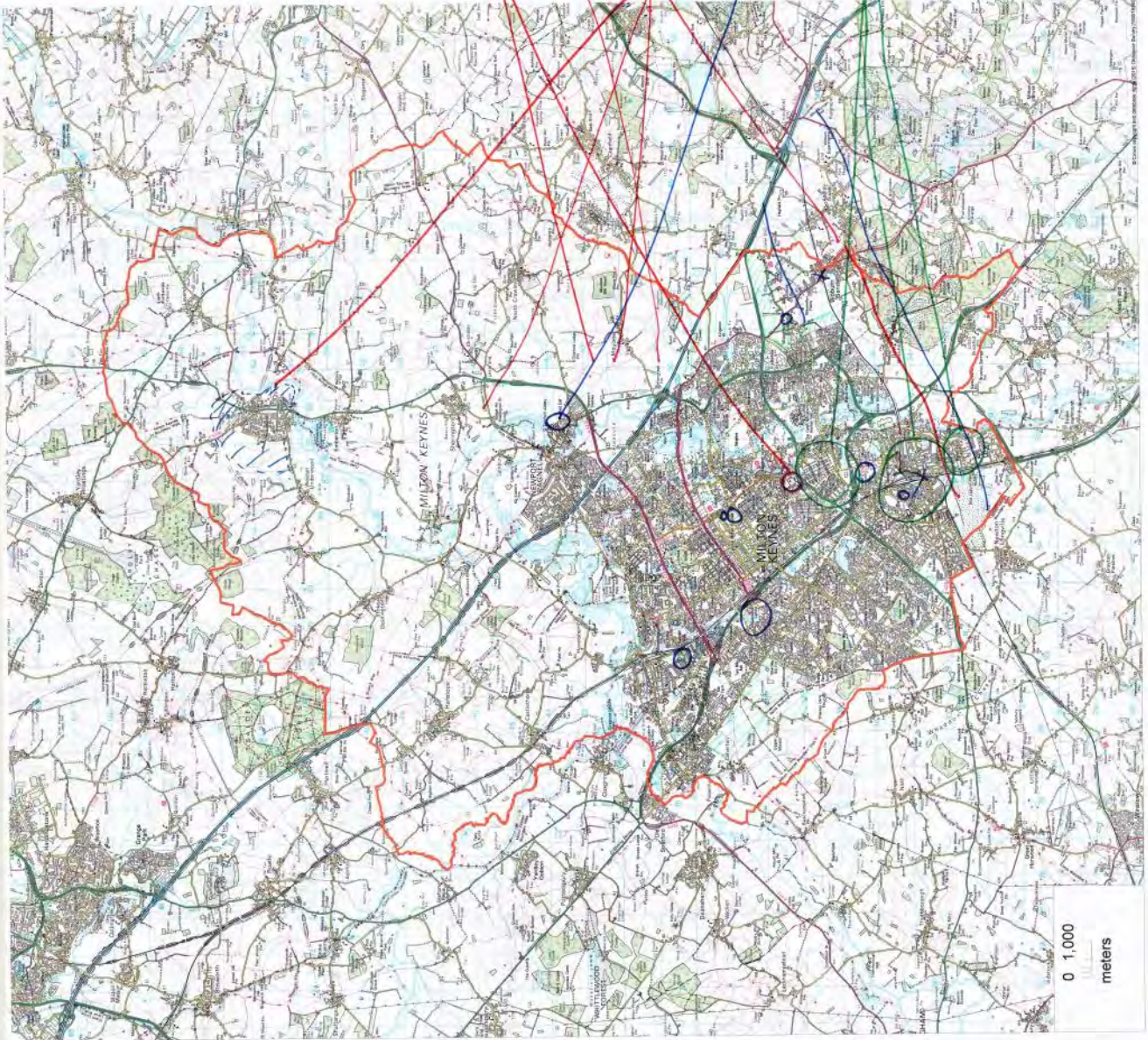
* Sister hospital & university

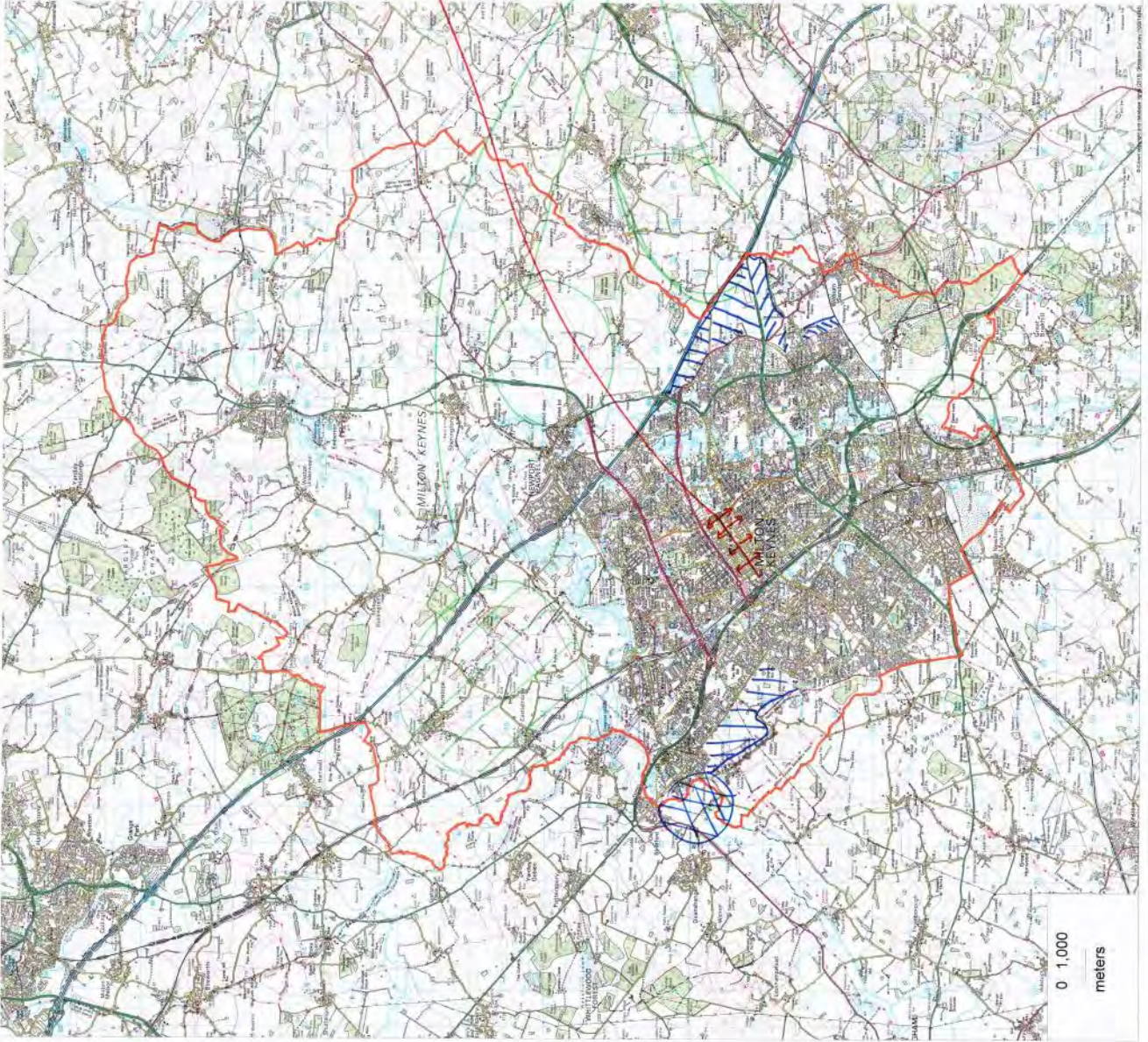
* Communication Links East of MI
(North + transport + IT)

* Housing south east + North of MI
(Links Bletchley/N. Oxford)

* create cultural diversity with facilities in other areas of MK.
(arts + sports + environment)

* Regeneration of existing areas





LONGER TERM GROWTH OF EAS

- less dominance of midsummer as transport hub
- Better links with Station.
- Review of how to centre works Day + Night.
- All transport types

SMALL GARDEN SETTLEMENTS

- Self sufficient.
- Linkage to economic + education hubs.
- RTS!

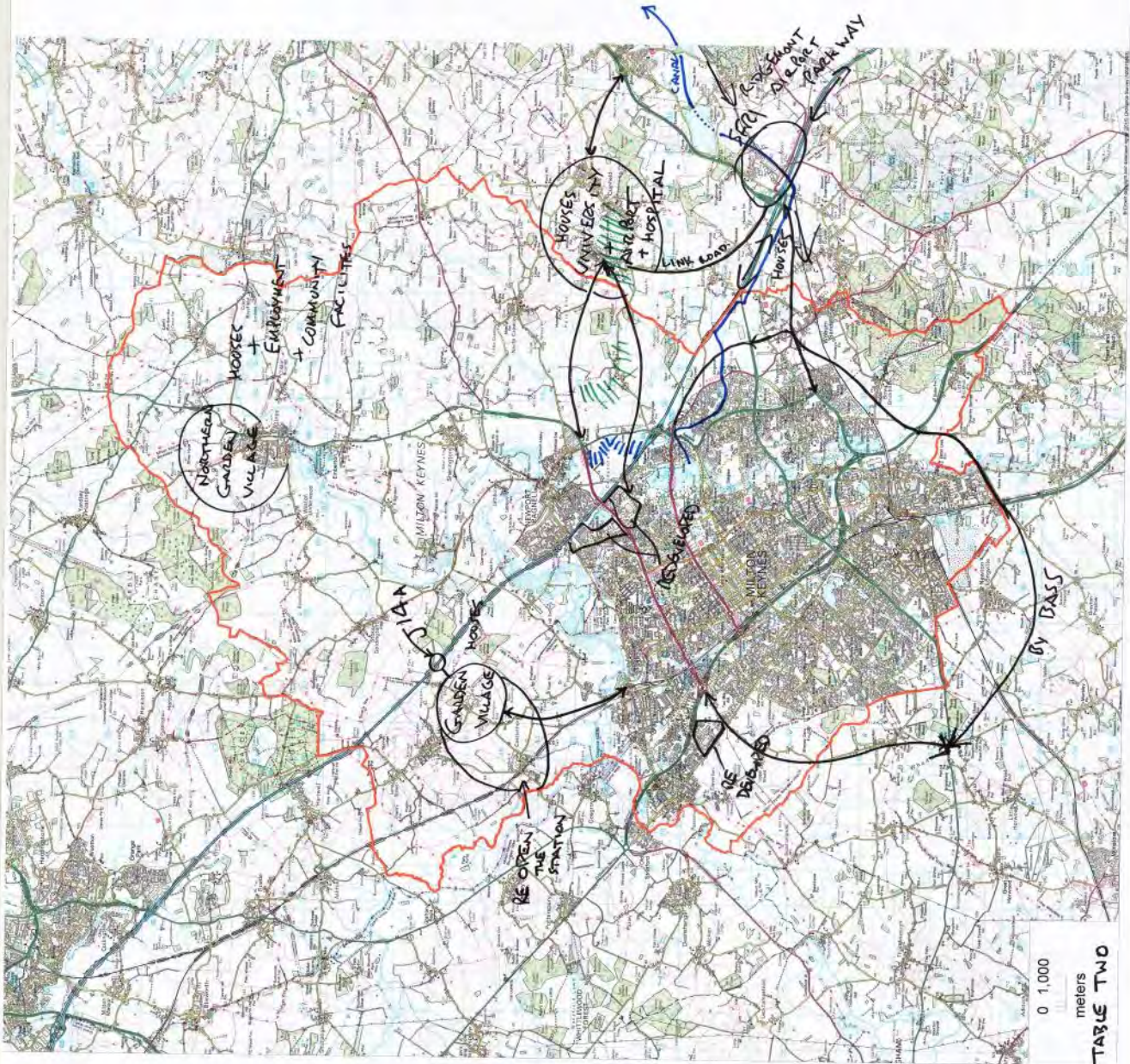
URBAN EXTENSION

- Intweaving into the existing City

Expansion Areas

0 1,000 meters

TABLE 1
THURSDAY
PM Session



0 1,000
meters

TABLE TWO

Thu PM

CLUSTERING OF COMMUNITY FACILITIES

with schools

MANAGING HOUSING MARKET/MIX/OWNERSHIP ETC.

MkC ownership etc.

cmc

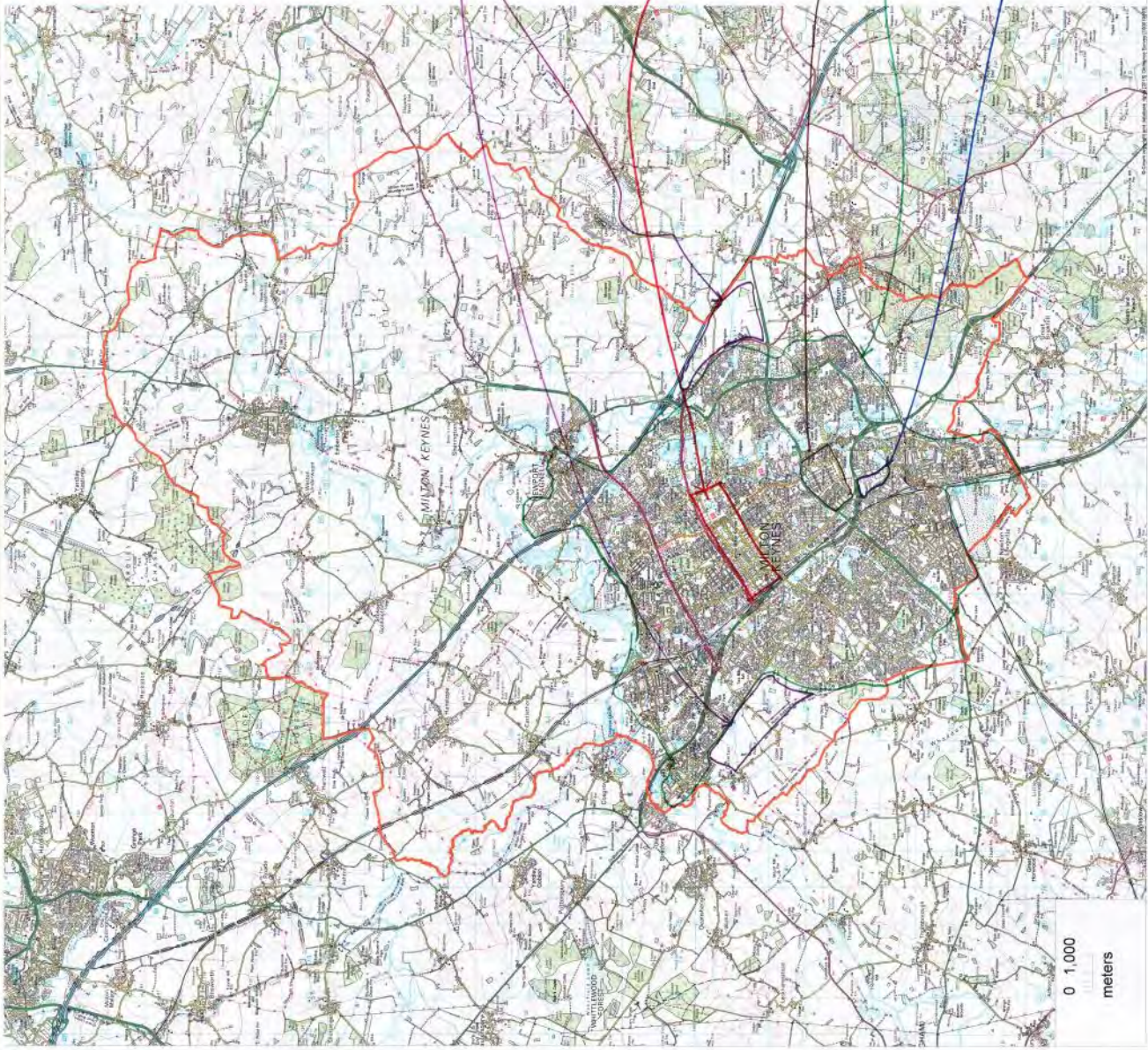
Urban buzz rather than just a shopping centre

- Meeting places
- University - international school - accommodation
- Identity - heritage - reinforce
- creative regeneration

Denser, taller (not necessarily space)

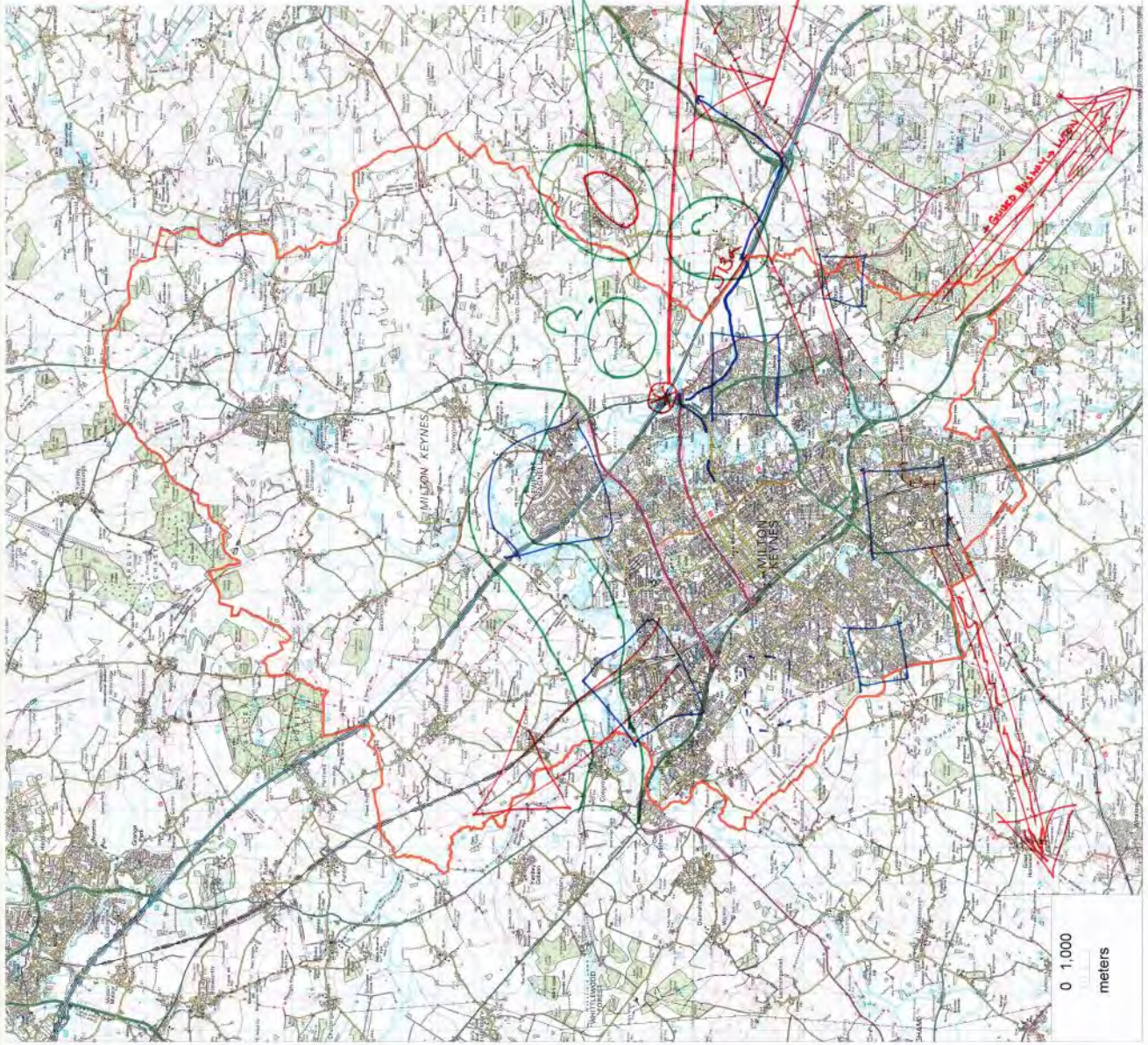
'Green belt'

Is this the best way to progress -> town centres



0 1,000 meters

Table 4
Thurs pm.



Build up existing villages to increase capacity

Extend linear parks/green buffer to protect existing villages if new growth

J14/Connection Roadpoint

E-W Rail line

Stable Network

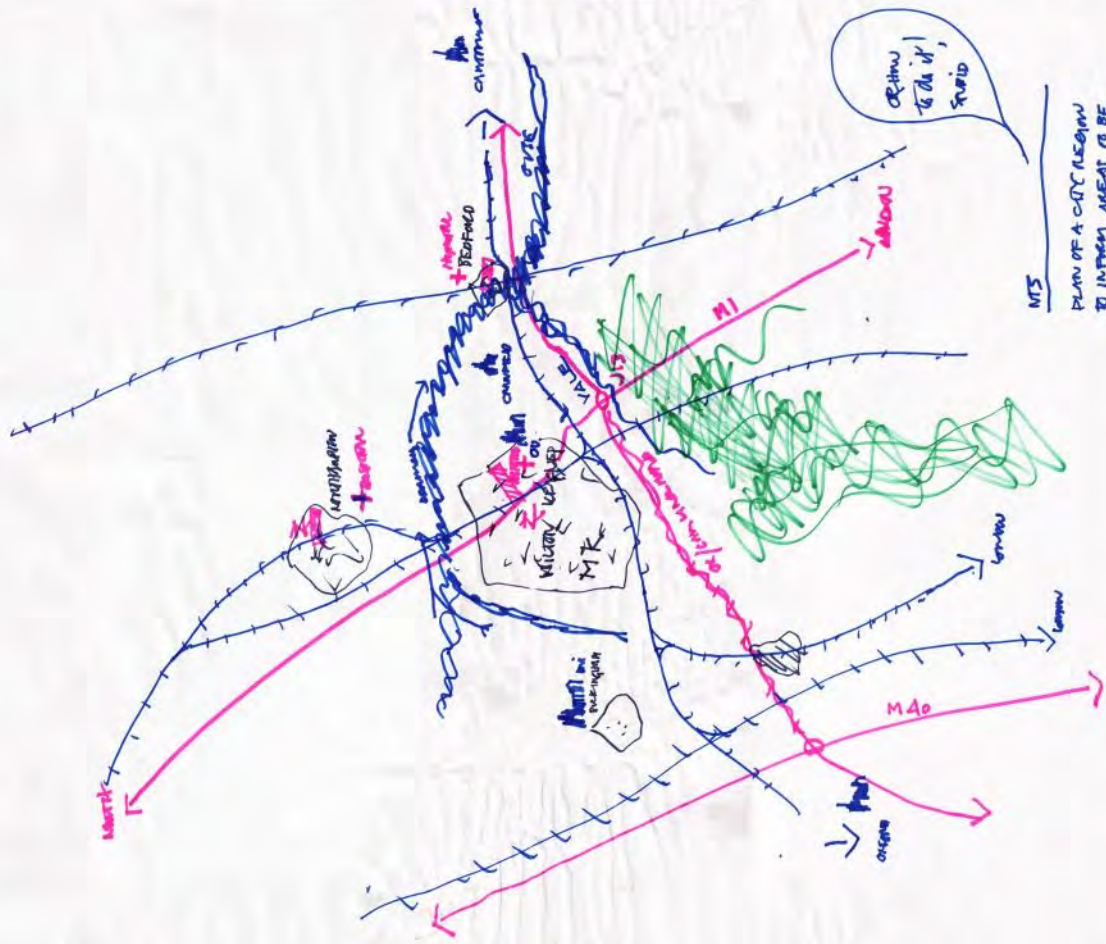
A Road Network Loop

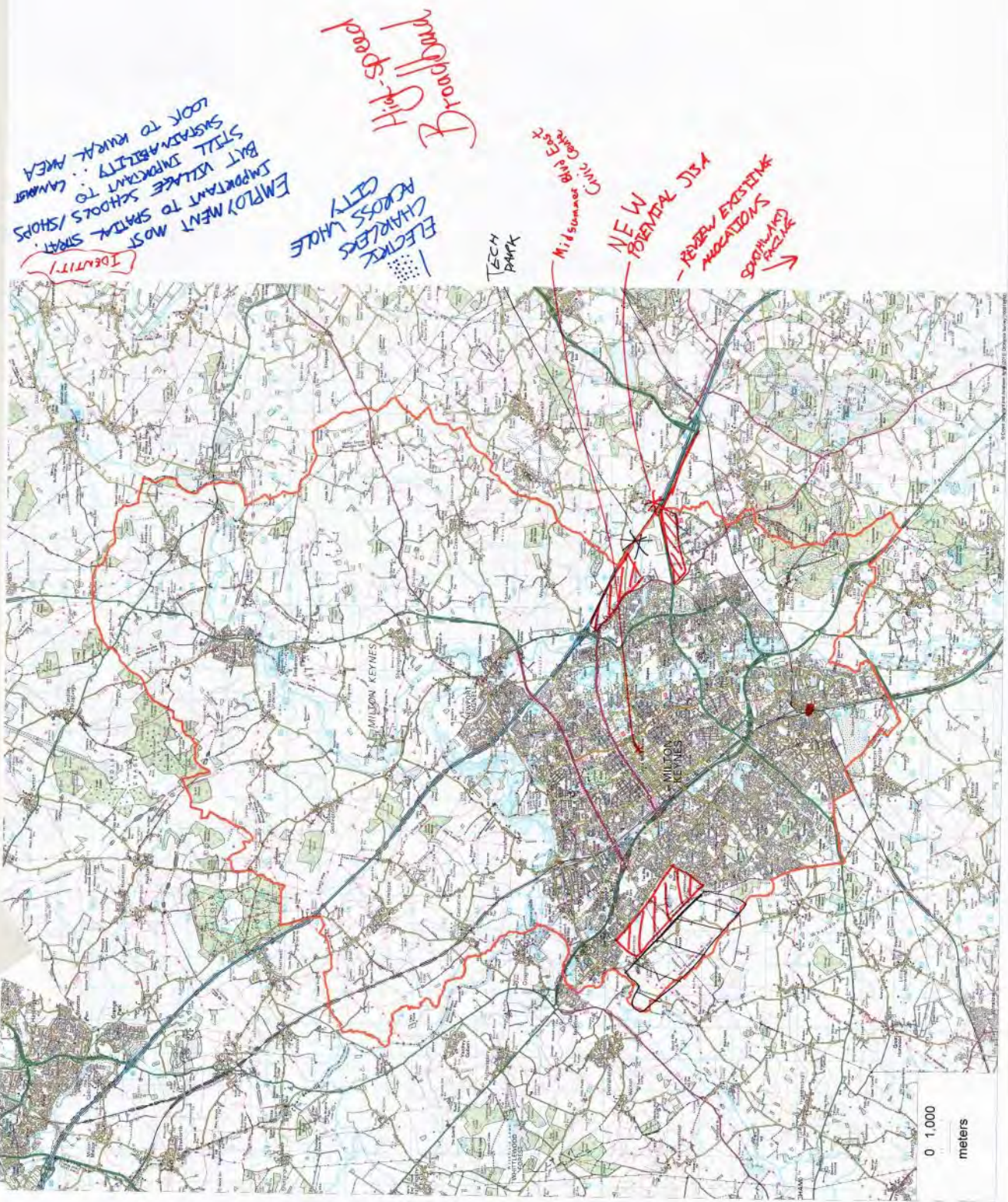
0 1,000 meters

Platitudes in landscape
C. beauty + character
- White / Moss roads
+ No Milton in vicinity
+ No Milton in vicinity

E-W + N-S links

Capitals





0 1,000
meters

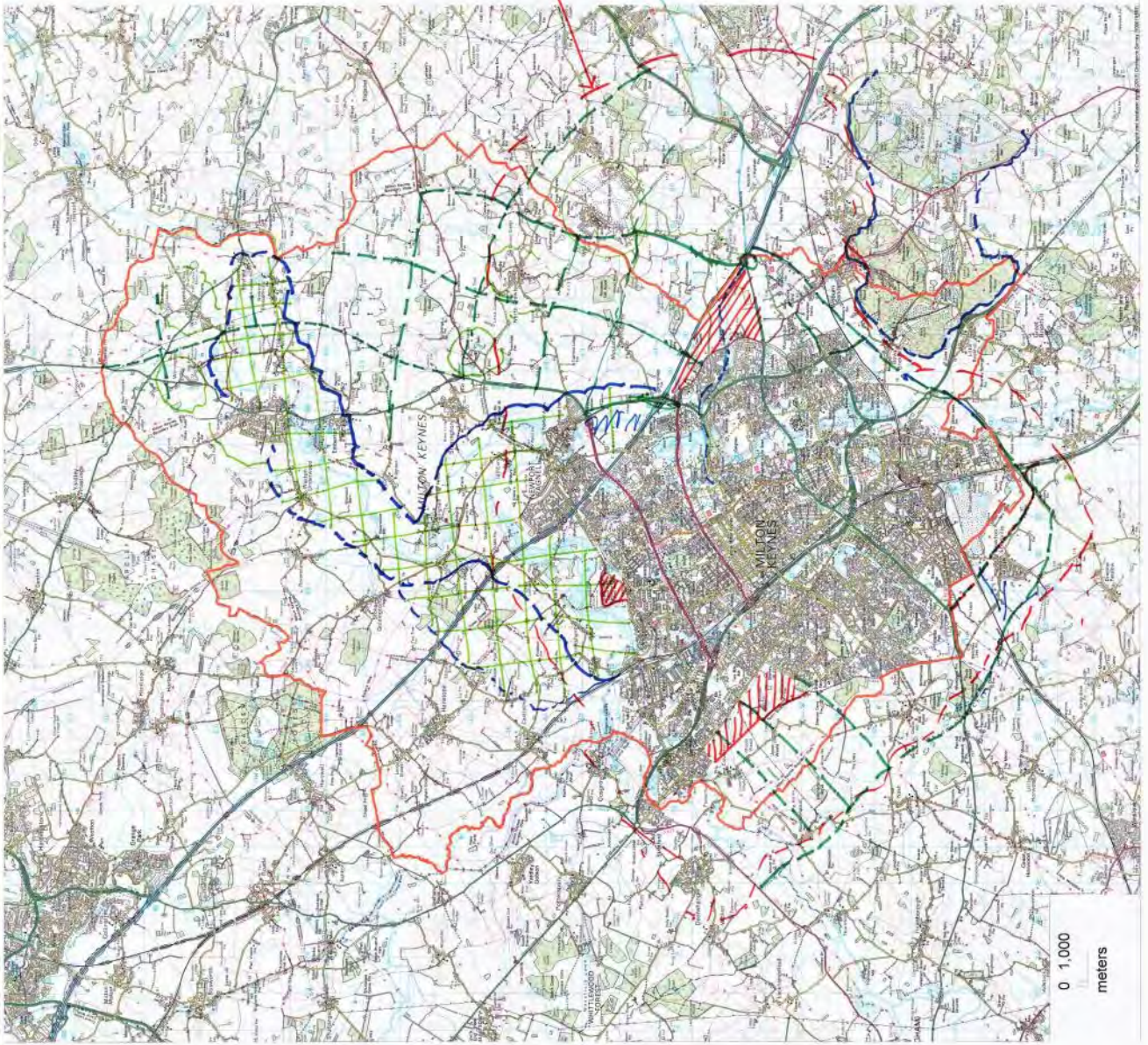
TABLE 2
PRI AM

--- Expanded grid road system.

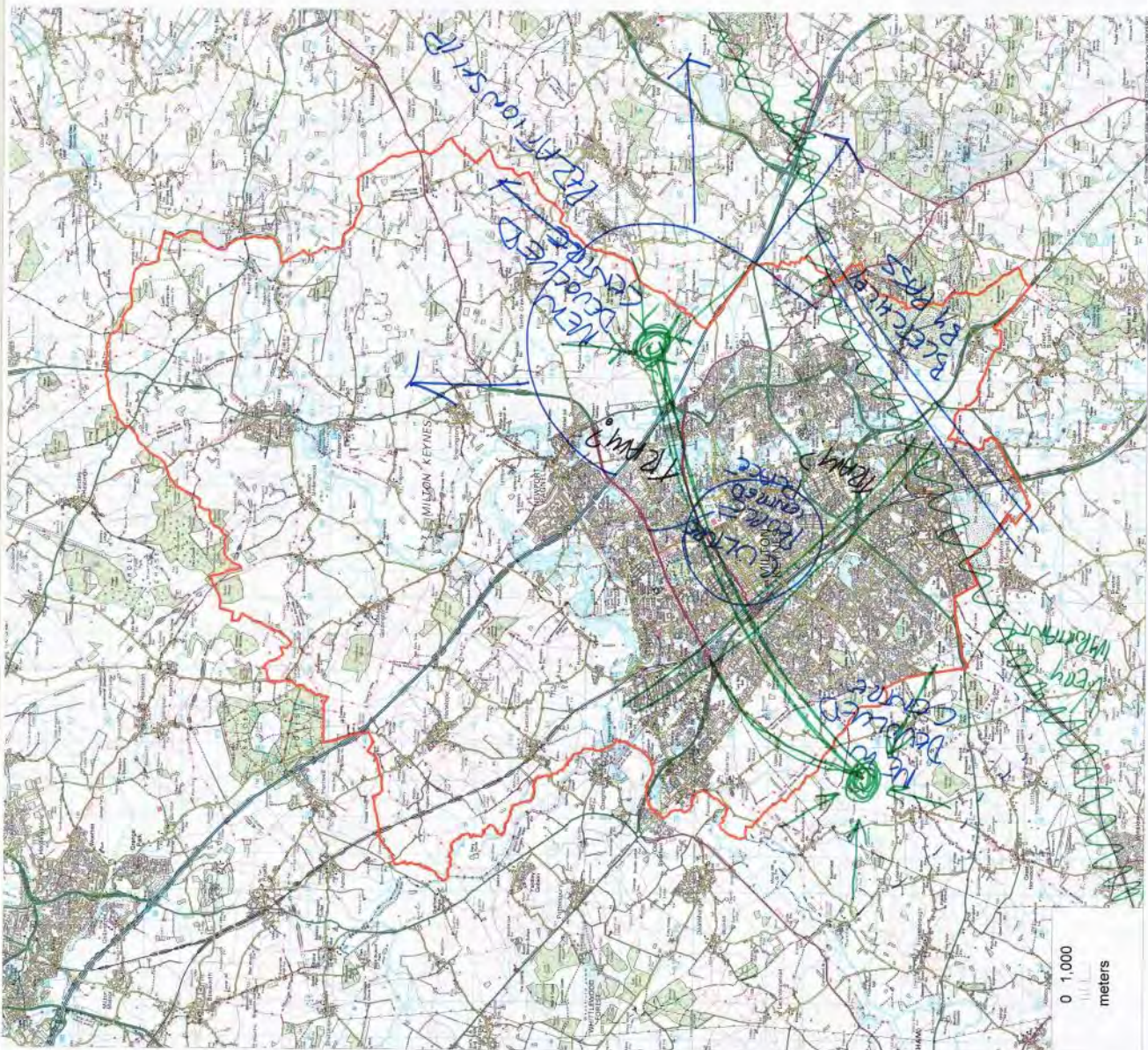
--- Green realm.

--- Designated area.

--- Reserve road strip



0 1,000
meters



© Crown Copyright

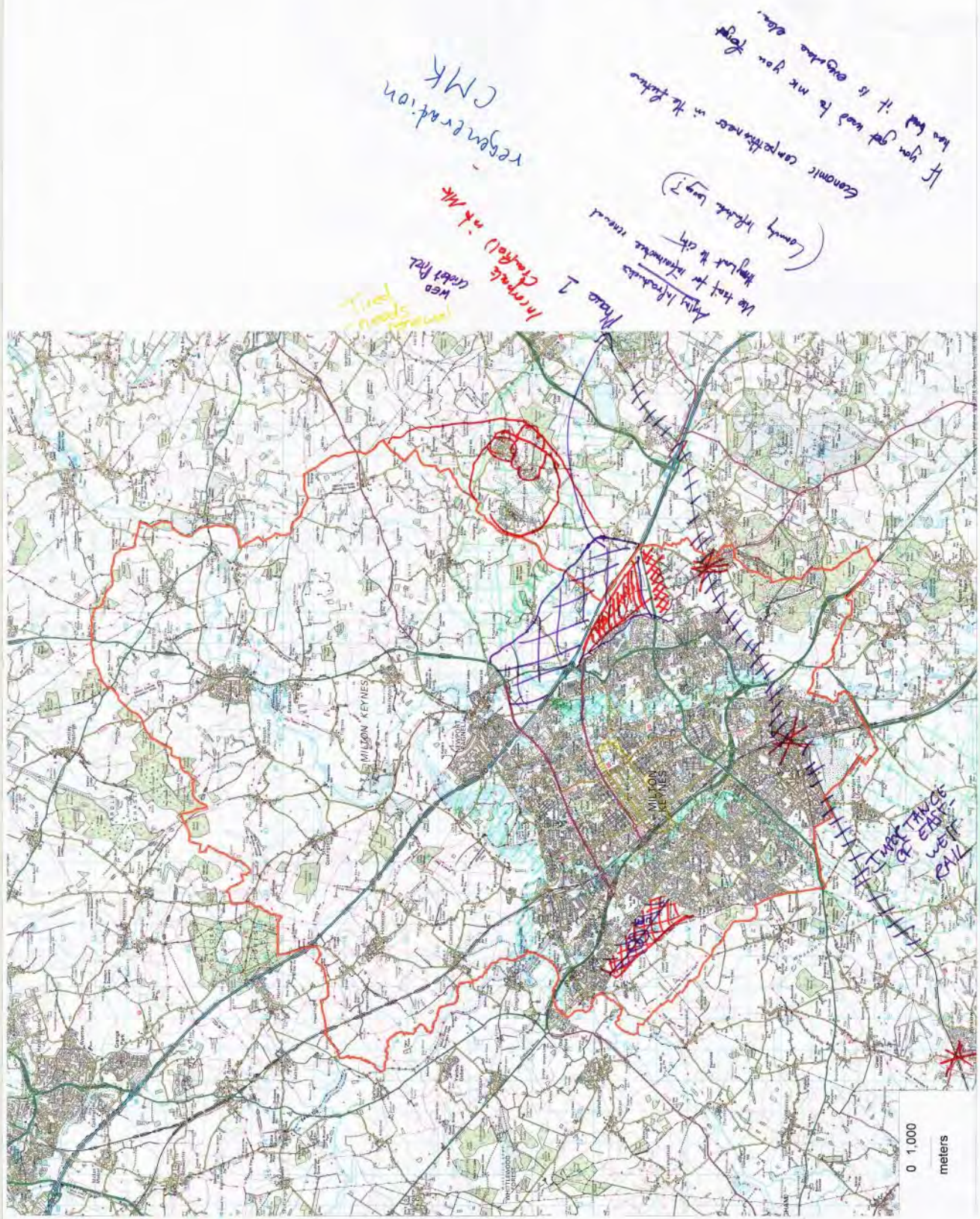


Table 4 Friday 27 March

GROWTH IS GOOD! AS LONG AS PLANNED WELL + LINKS WELL

T = transport infrastructure
Join the dots!

T = new transport hubs? N. Pog.

3/5

TABLE 5 FRIDAY

CMK
landmarks-building: retain existing + encourage new.
dishinveness
it is a city.
independent shops
supermarket / food retailing
leave space for more housing over the next 25yrs.
populate the city centre
24 hr city.
real time information for transport.

CLANFIELD - DEVELOPMENT AREA / POTENTIAL

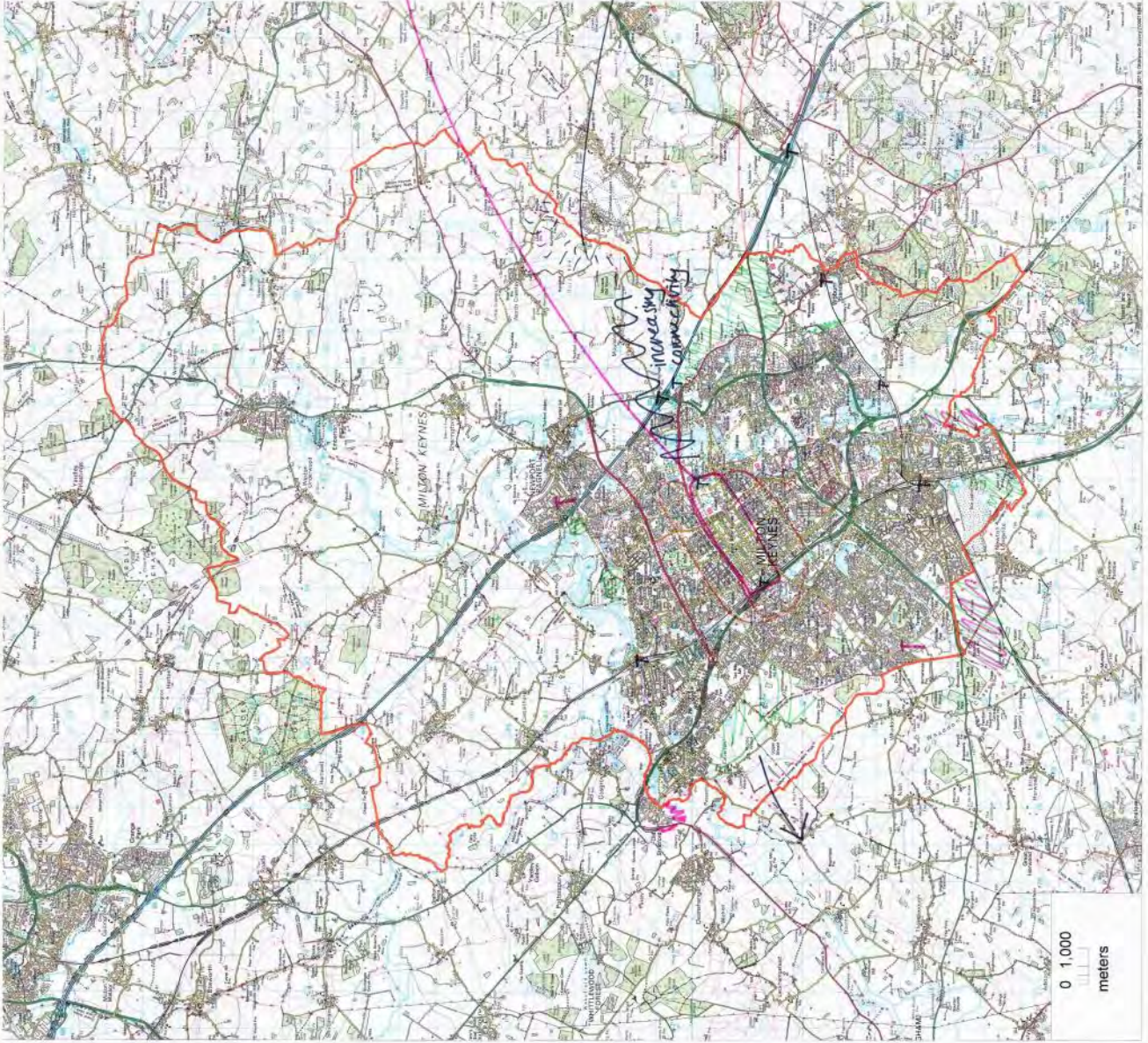
Keep the grid road structure for all forms of transport.

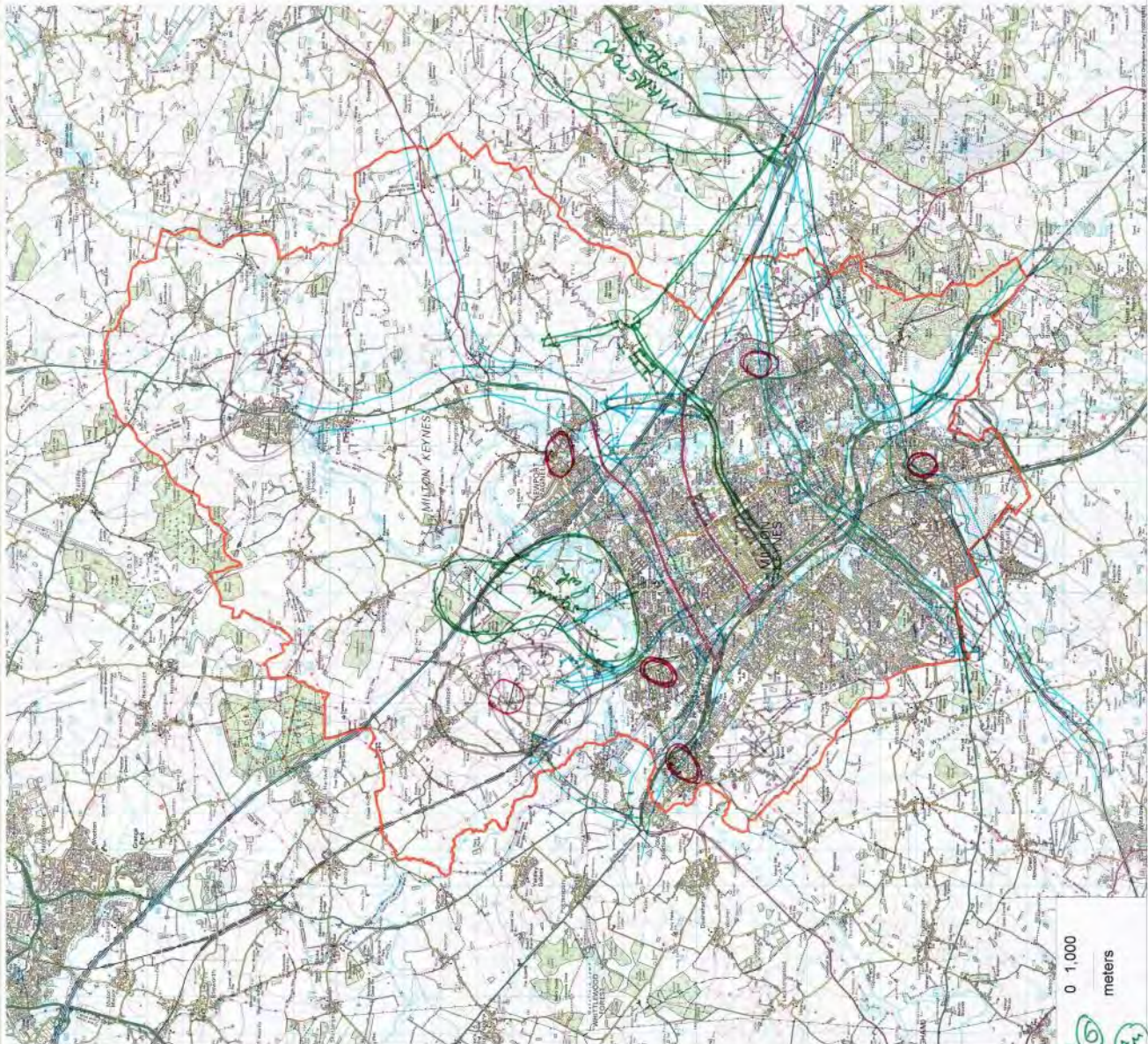
Quality of life
All worse life expectancy in the



unplanned nature
high design standards
sustainable
socially neighbourly
renewables
connect to nature

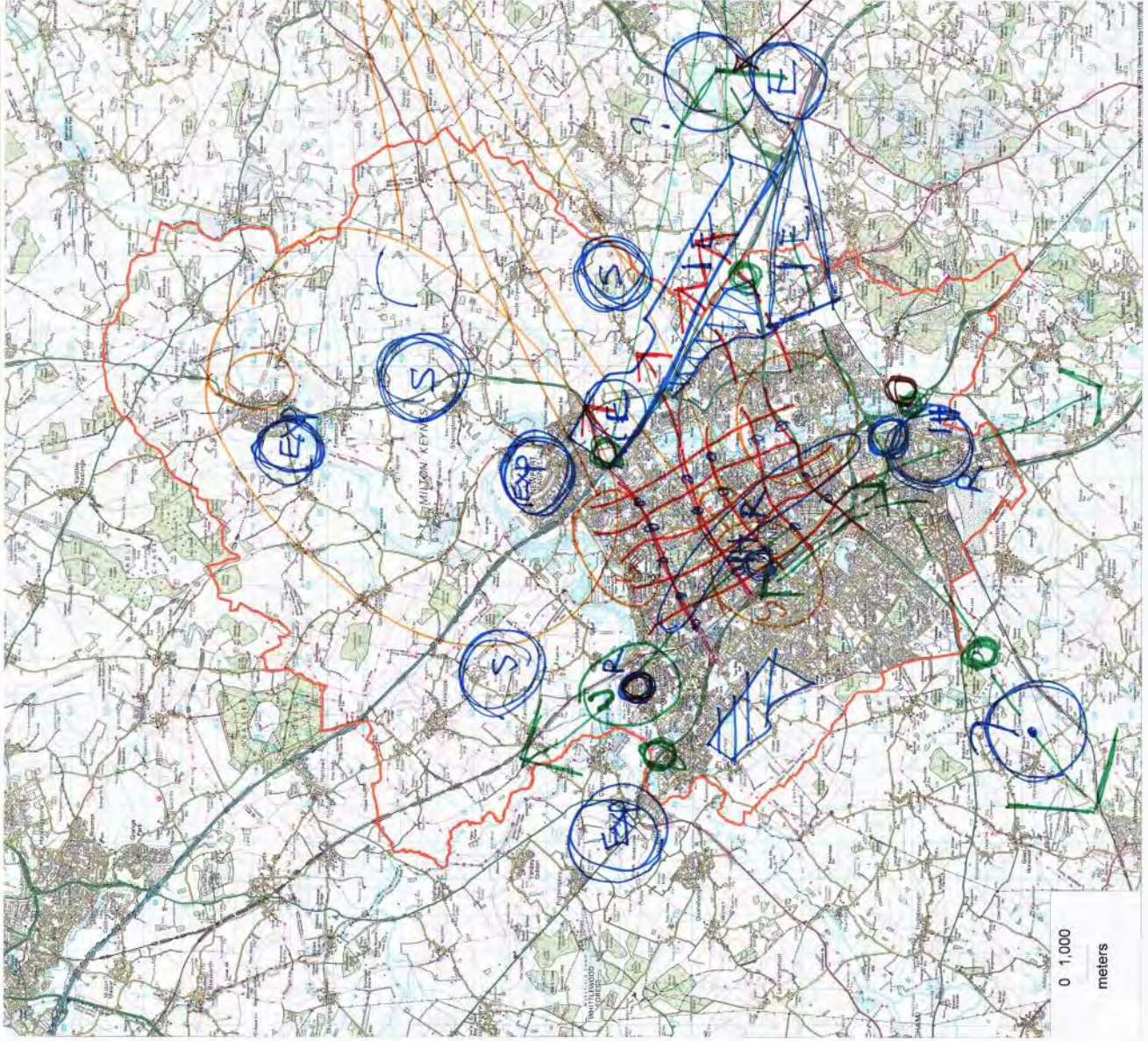
WE CAN HAVE IT ALL!





- transport route
- development area
- green space
- local centre retail/employment
- tram line
- planned/redesigned development of centre

Table 6
Friday AM



FUN!
Centres (expanding CNK?)

- Sport - SPECIALISING SATELLITE TOWN. INTERNATIONAL SPORTING (CULTURAL) TOURS
- Culture - developing niche markets

- Community - not more of the same time for a new home world. - centralised/disorganised

- F** - FUTURE GROWTH - HOUSING, EMPLOYMENT, OPEN SPACE
- R** - REGIONALISATION - E/W STRATEGIC STANDARDS MORE THAN SMART
- IE** - INTEGRATED EDGE - EXPANSION
- S** - SATELLITE - STAND ABOVE
- E** - EMPLOYMENT - HIGH TECH, CLUBS

- P** - Potential growth points
- K** - key interchange points
- U** - UNIVERSITY RESIDENTIAL?

Mobility + Access

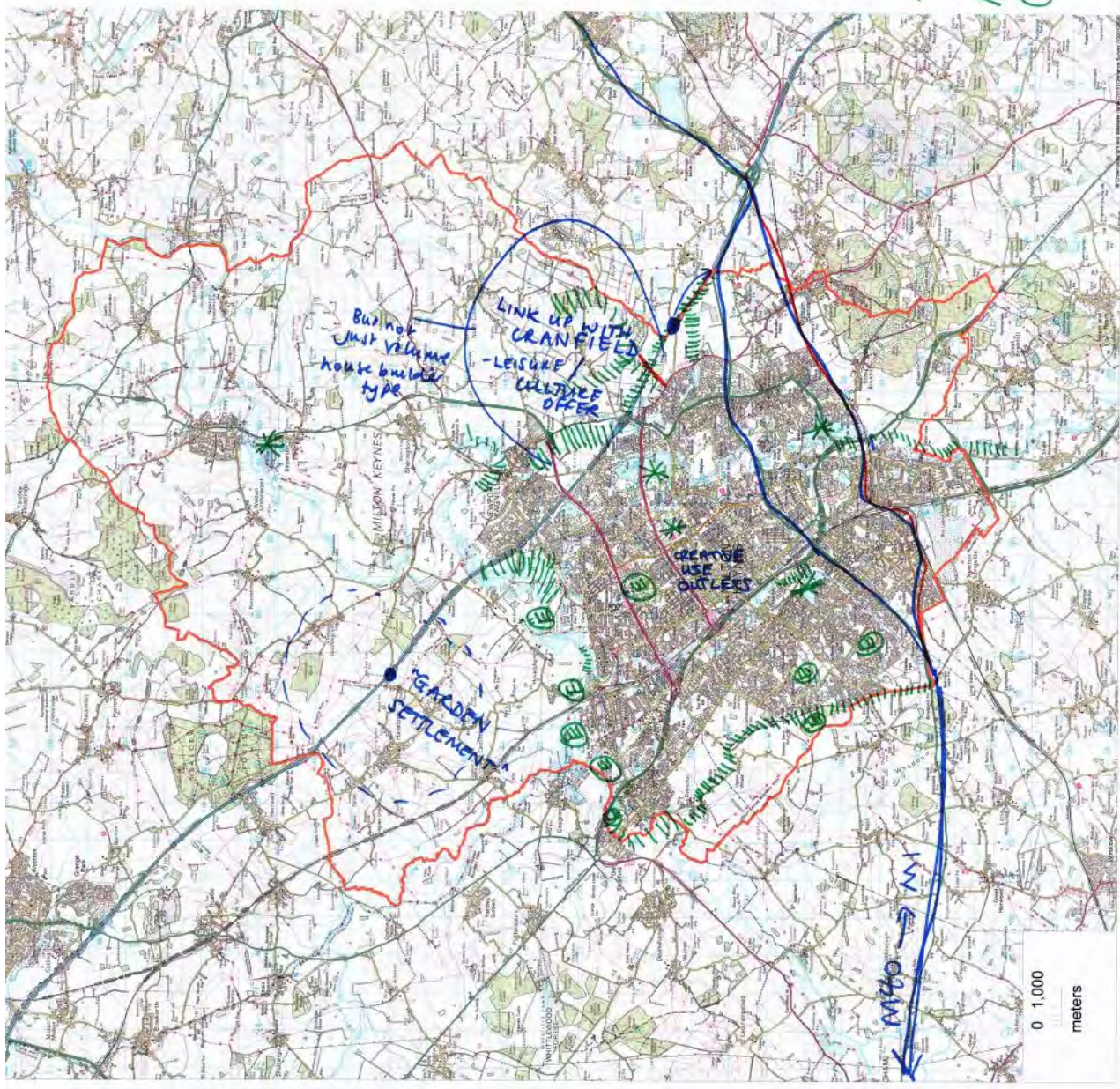
- Good Regional connectivity N → S
- Critical to develop E-N
- Interface between regional/national/local network
- Advanced transport.
- green bridges

12/05/2015
 11/6/2015

TABLE I
 June 2015
 - Mickle
 - Greg
 - Rachel
 - Phil
 - Robbie
 - David
 - from

• new inland junctions
 - upgrade A142
 at Conington
 (small bridge over
 river) on main
 road
 Grid orientation
 marked out

- * Destination recreational/cultural parks
- ||||| Linear Park Extensions.
- (E) Strong ecological 'core' areas (but ecological links throughout the entire green network)



9 future proofing all infrastructure

8 Cutting edge IT

MM

7 Encouragement of independent retailers + restaurants eg to regenerate Bletchley

6 Green Space to be protected + enhanced

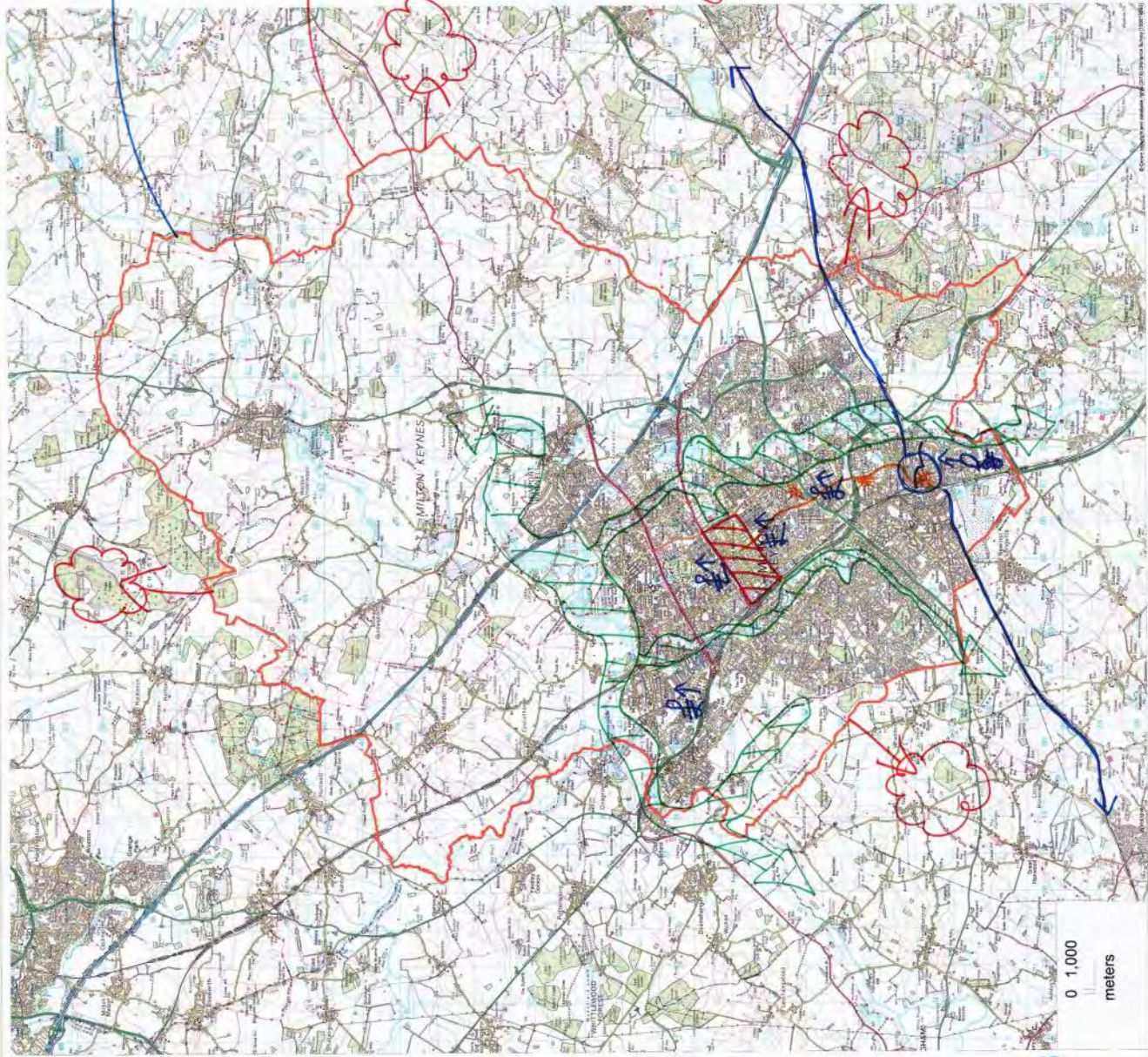
5 Promotion of CMK as Regional Centre - Cultural / Art gallery

4 Shared economic prosperity

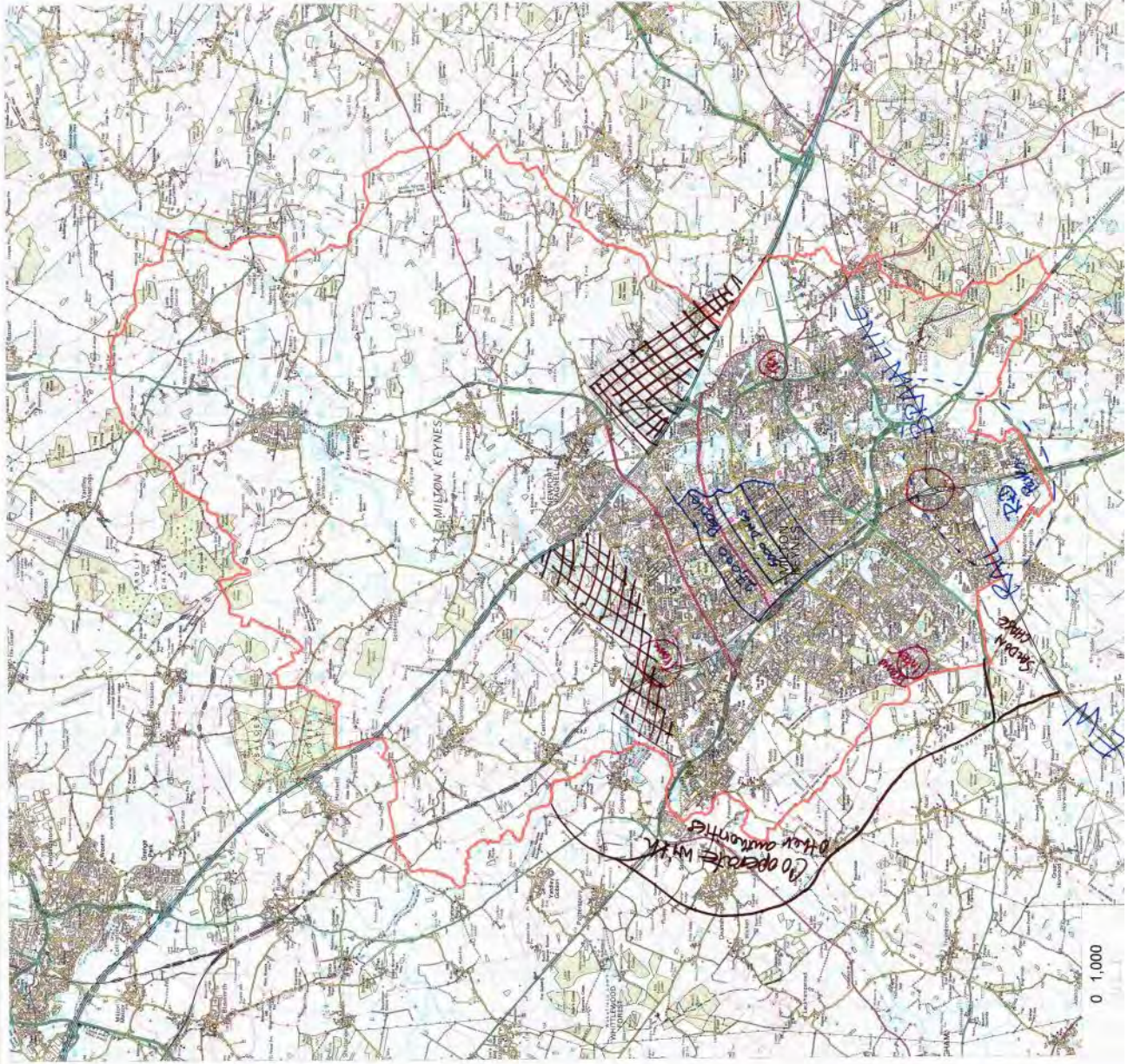
3 Tramway Thru key destinations

2 Integration of infrastructure + development eg East-West rail + Bletchley station cooperation with other authorities

CE



8



NO GO AREAS

Cross Barrow
POUNDS

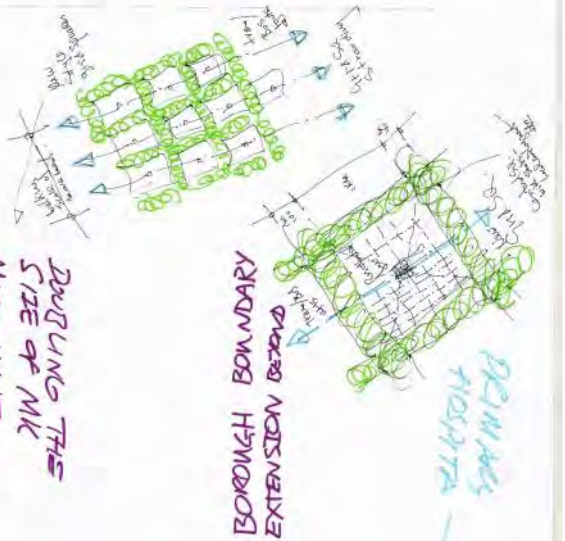


Rural SPECIAL ROLE →
NEWPORT PAGNEIL + OLNEY

Build via Neighbourhoods

Efficiency Standards for new homes + upgrade older
Roll out drainage / Environmental Standards / Green Infrastr.

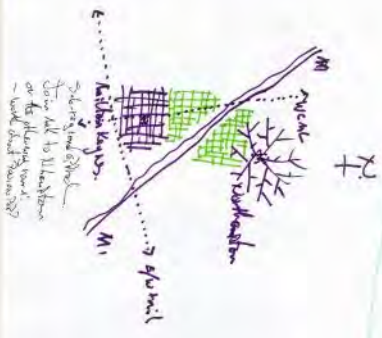
TABLE 4
11-06-15



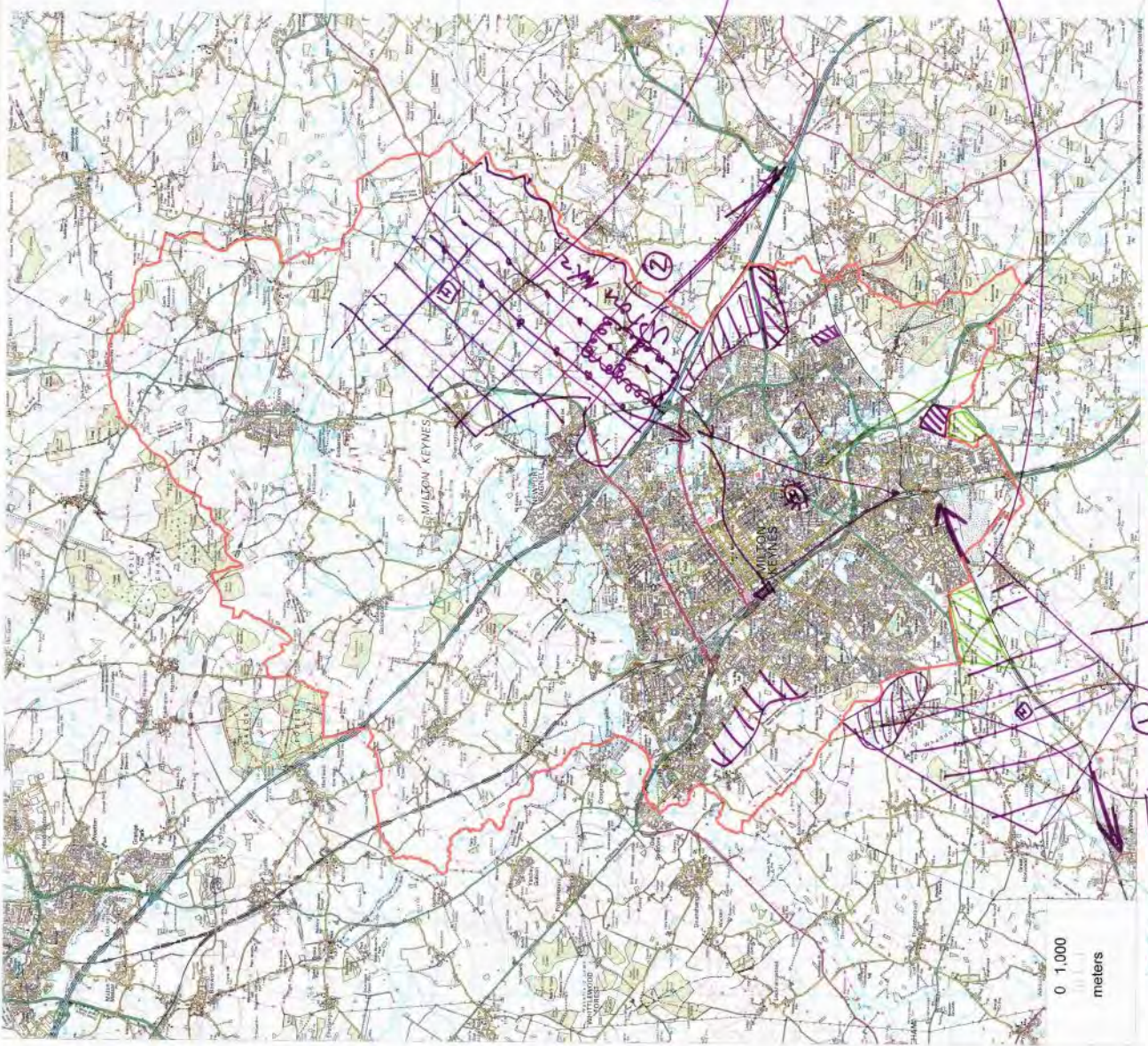
MUST HAVE
 DOUBLING THE
 SIZE OF MK
 TRANSIT NETWORK
 IND CLK E.G. LIGHT RAIL,
 UNDERGROUND MONORAIL,
 OR OVERHEAD SYSTEM
 SIMULTANEOUSLY, OR
 DUBAI

BOROUGH BOUNDARY
 EXTENSION BEYOND

PRIMARIES
 HOUSING



EXPANSION
 ROAD



"FACILITATING"
 REGENERATION

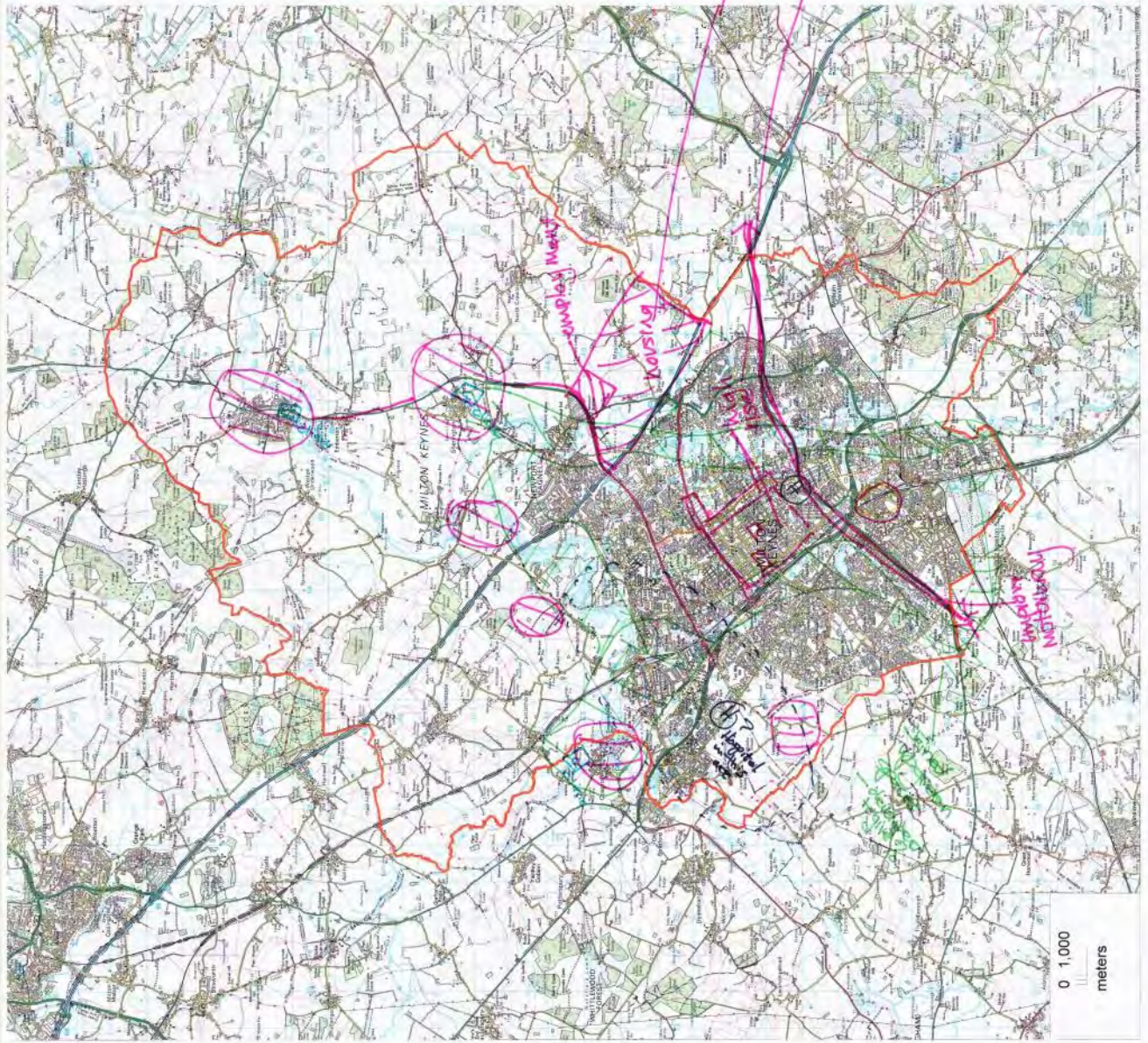
TRIPPLING IN SIZE

① Sewer
 capacity

UNIV
 CAMPUSES

EXPANSION
 SECTION

TABLE 5
11/6/15



Size!?

parking

regeneration
off area
private sector led

Substantiable Public travel

Better mix of housing

high rise CMK
Students/
workers

garden city

Schools

satellite
towns

More trees

0 1,000
meters

Trace
in letters

Commuted Development
- Greater job growth
- Quality of life (cycle space etc)
- Quality of Housing
- Home by night!
Protect these areas!



Energy Economy
High Value Business
High Rise Housing (for all kinds of all)
to not use too much CPG land on this

Key location outside MK Bounding
- Connections
E W Rail
Rapid bus or similar

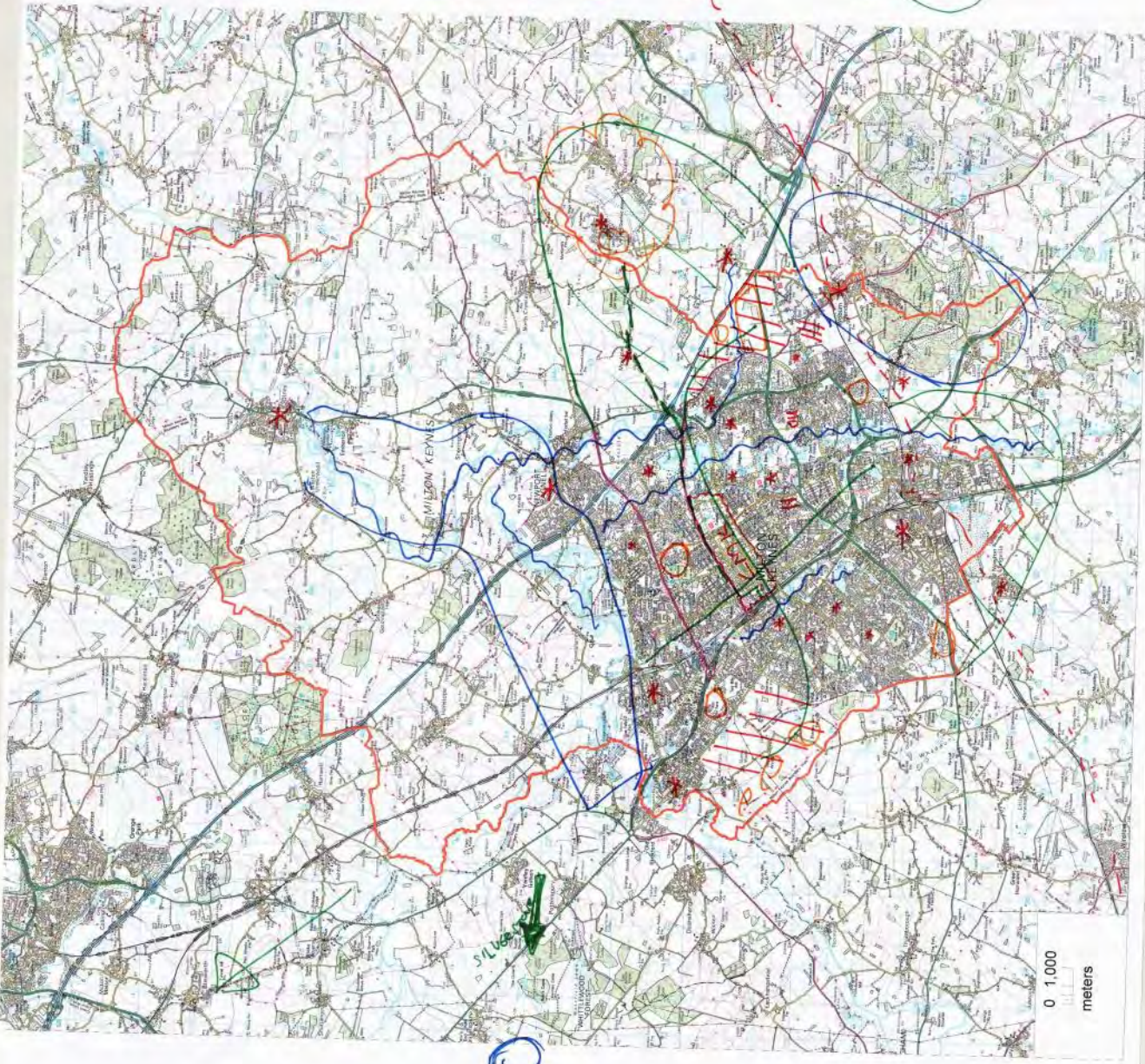
Dispersed employment zones
- mixed density centres

Big floppy cross - primary bus routes

Green/blue Linear Park - extend this!

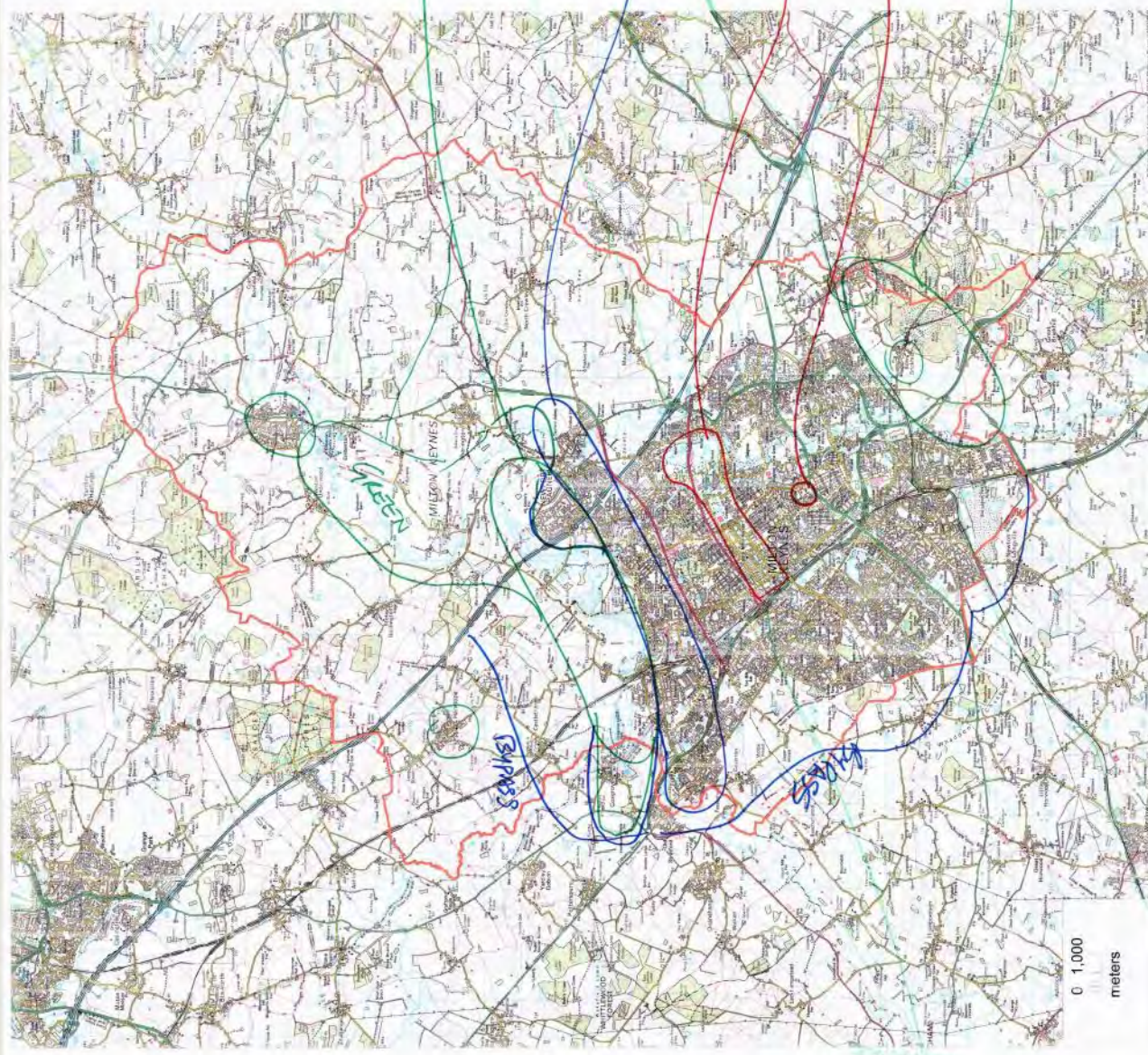
Search Area for
future growth.

Pre - 2000s, 2010s, 2020s
- established 100%
- new 100%
All to be protected
Next 100 days
- 100% of
- 100% of
- 100% of



0 1,000
meters

TABLE 7



Biodiversity + wildlife heart

Indicative road major link

Northern Heritage corridor

Main transport East-West

Cultural heart + social interaction

Specialist health with other satellite services

Southern biodiversity + wildlife corridor

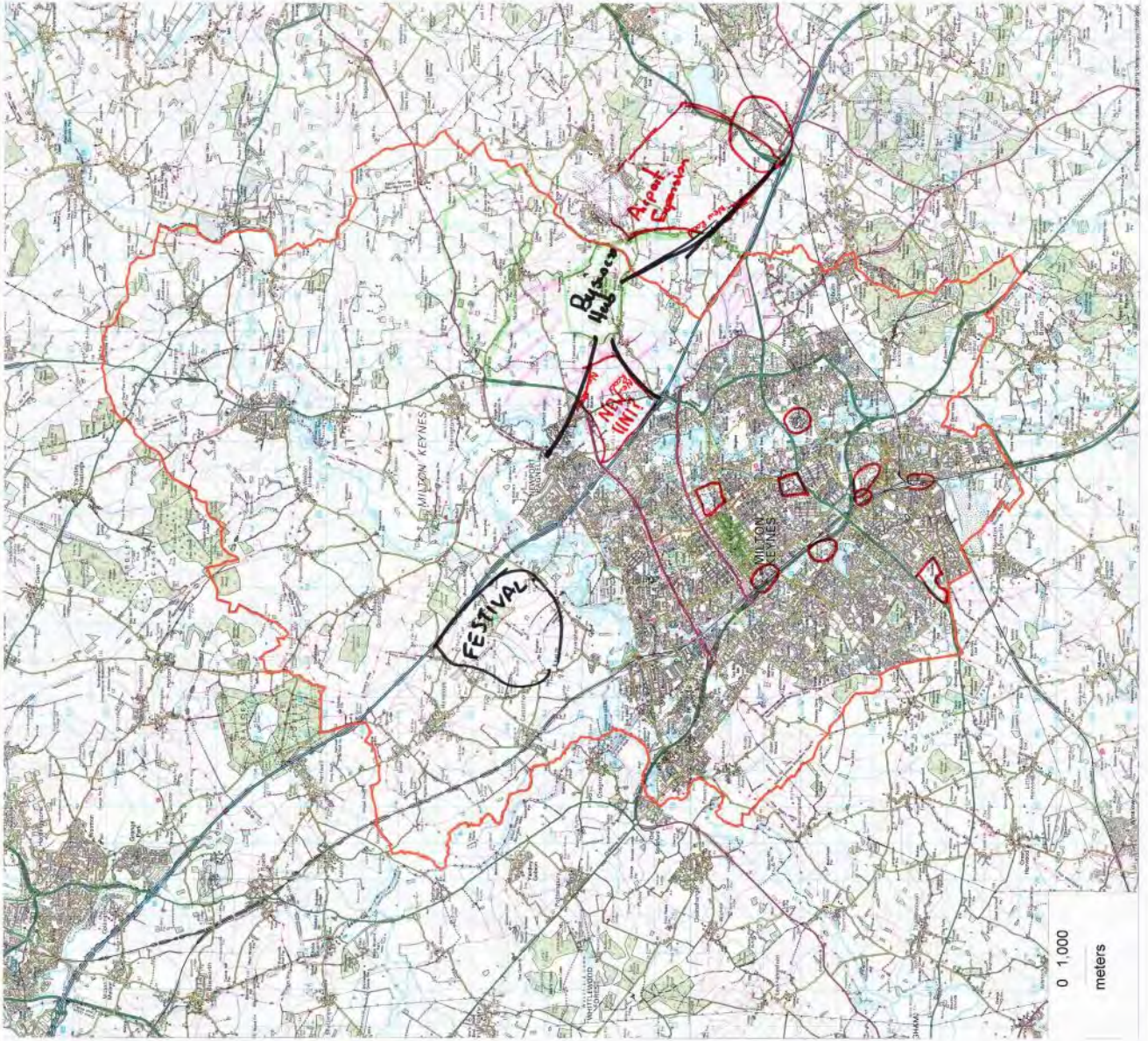
Density in MK - higher, make the most of the existing city land.

Protect the identity + integrity of market towns + villages.

Table 7 MK/HT

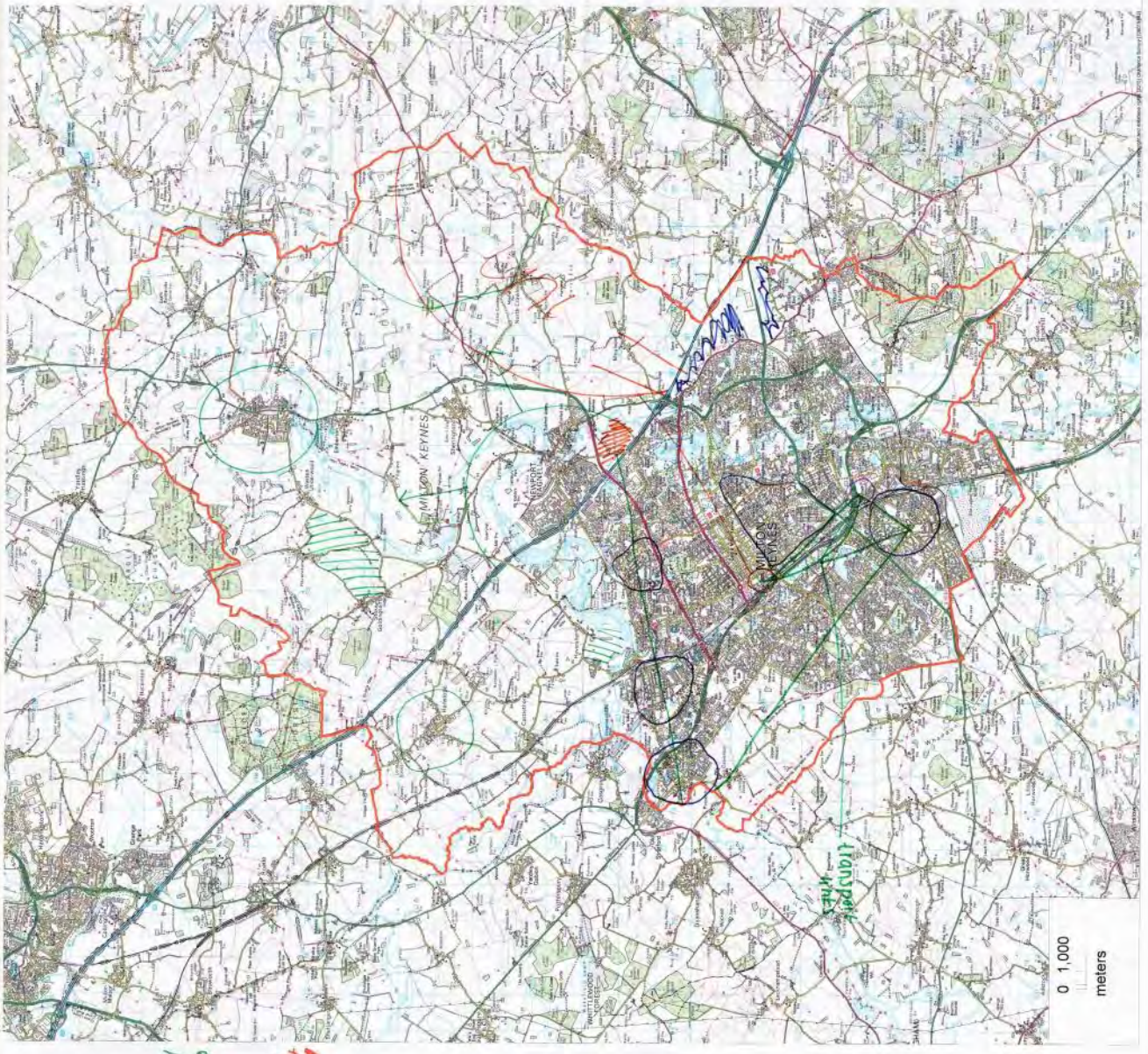
- carbon neutral university and business park
- circular mass transit maybe monorail

Thursday 9th April
Group 1



14th April
Thomson
Group 2

* Cultural / Musical
* Regeneration



extract
Home Zone