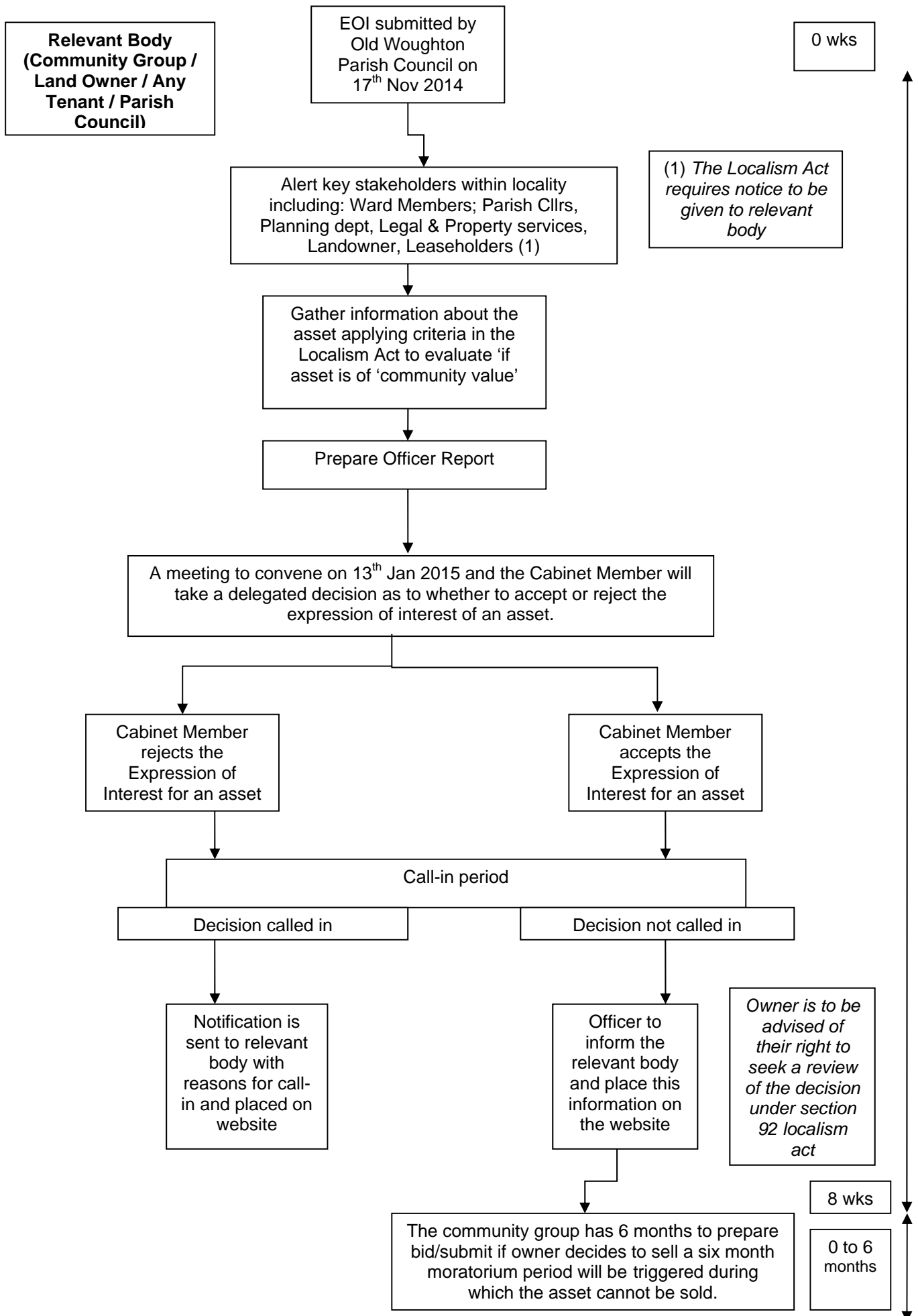
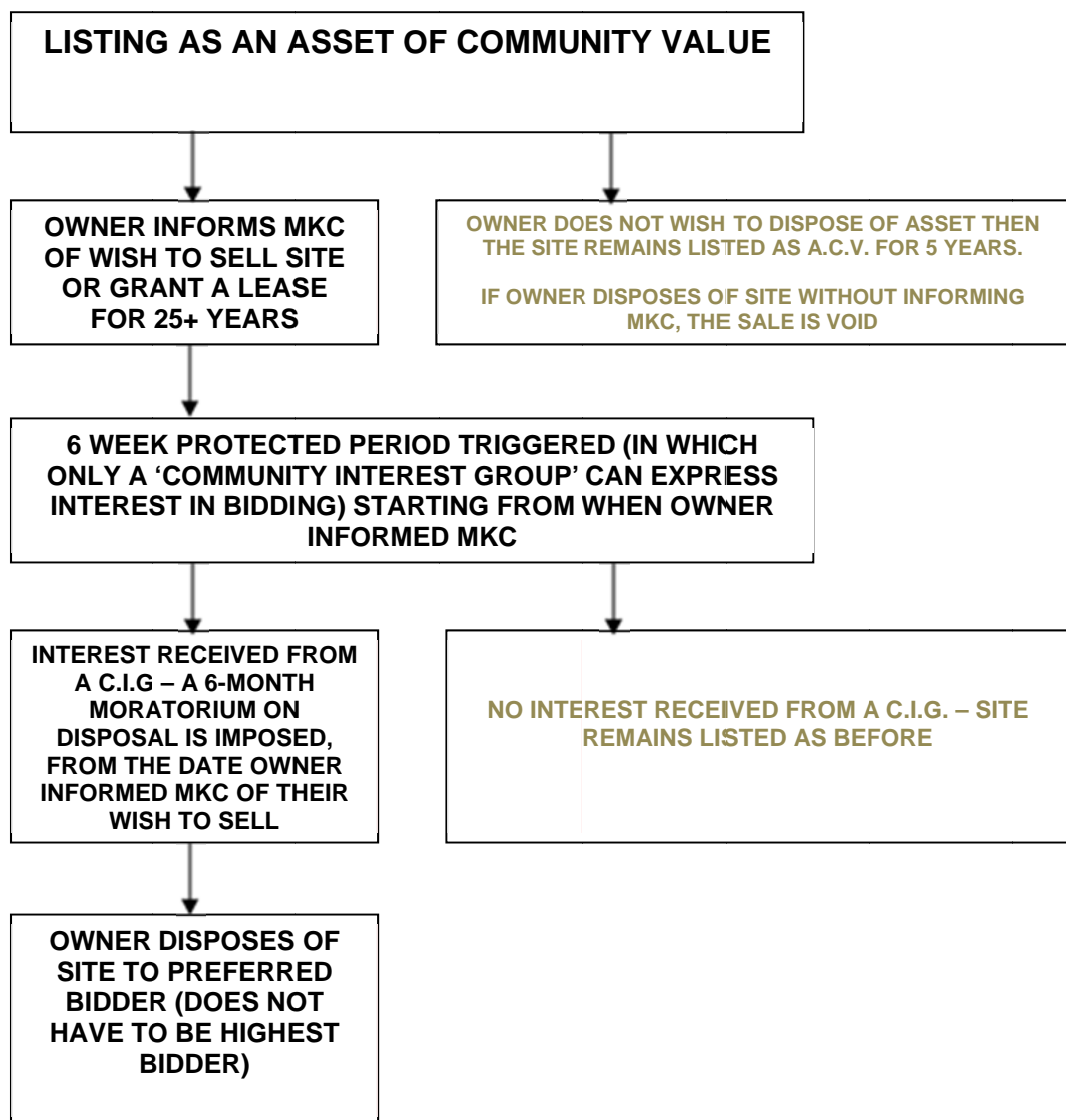


Flowchart for Community Right to Bid: **The Olde Swan Public House ANNEX A**



## POST DELEGATED DECISION FLOWCHART



*The definition of a “community interest group” is:*

- *The local parish council OR*
- *One of the following, if they have a “local connection with the land”, i.e. their activities are wholly or partly concerned within the local authority’s area or a neighbouring authority’s area:*
  - *A charity*
  - *A company limited by guarantee which does not distribute surplus to its members*
  - *An industrial and provident society which does not distribute surplus to its members*
  - *A community interest company.*